



*Nourison*<sup>TM</sup>

**COLLECTIONS**

VOLUME 1 | 2021

# THANK YOU

Nourison was fortunate enough to keep our business running through the unforeseen challenges of this past year. We are grateful for our team that worked tirelessly to keep our orders flowing and for our front line and healthcare workers that helped keep us safe. Last but not least, we are grateful for you, as we know we would not have been able to make it without our dear customers and friends. We hope that Nourison's partnership has also strengthened your business and helped you get through these difficult times.

This new catalog includes many of our higher quality products and new introductions. Styles include timeless classics to contemporary trends. We hope these products help support your business this coming year as we all look forward to a brighter future together.

Stay healthy, stay safe and we hope to see you soon!

*-Nourison*



PARISA PSA05 MULTICOLOR

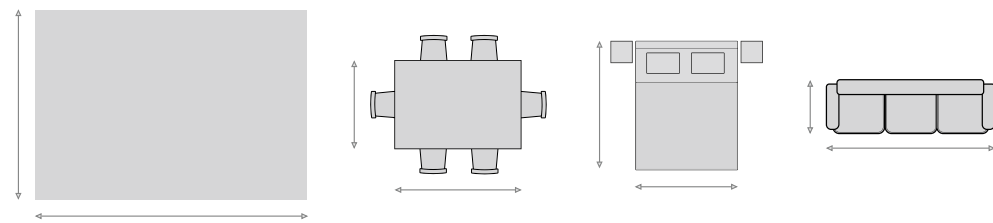
## 2021 COLLECTIONS CONTENTS

1	ARTWORKS
9	CHROMA
15	GEMSTONE
23	JAIPUR
33	LIVING TREASURES
41	MAJESTIC
49	NOURISON 2000
59	PARISA
67	PRISMATIC
85	STARRY NIGHTS
95	TWILIGHT
109	CK33 MESA
113	CK36 GRADIENT
121	CK50 BALIAN
129	CK400 HALO
133	CK890 PRETORIA
137	CK920 KATHMANDU
141	CK930 AGADIR
145	CK940 RIVERSTONE
149	CK960 NORTHWEST
153	CK990 ABYSS

# SIZING TIPS

## HOW TO CHOOSE THE RIGHT RUG SIZE

PROVIDING MEASUREMENTS OF THE ROOM AND FURNITURE ENSURES YOU GET THE RIGHT RUG FOR THE SPACE



### LIVING ROOM TIP

Make sure your rug is sized properly for the furniture and seating area. The rug should pull each piece together into a single area.

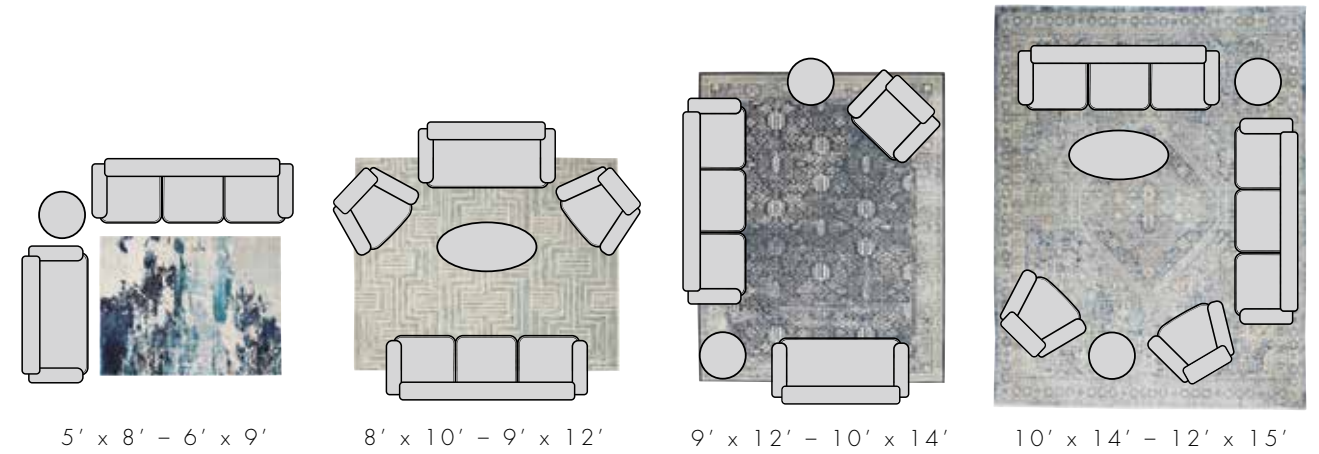
### DINING ROOM TIP

Leave 18-24 inches of rug on all sides, so that chairs stay on the rug when pulled back. Rug should be sized to fit the room, not the table.

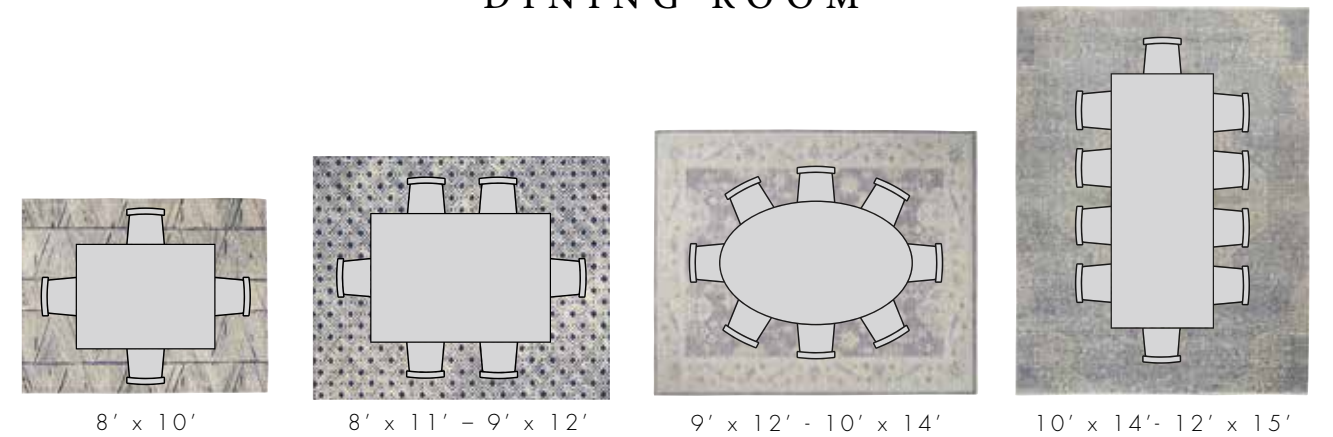
### BEDROOM TIP

Leave at least 18 inches of rug on either side of the bed. You should be able to get out of bed and still stand on the rug.

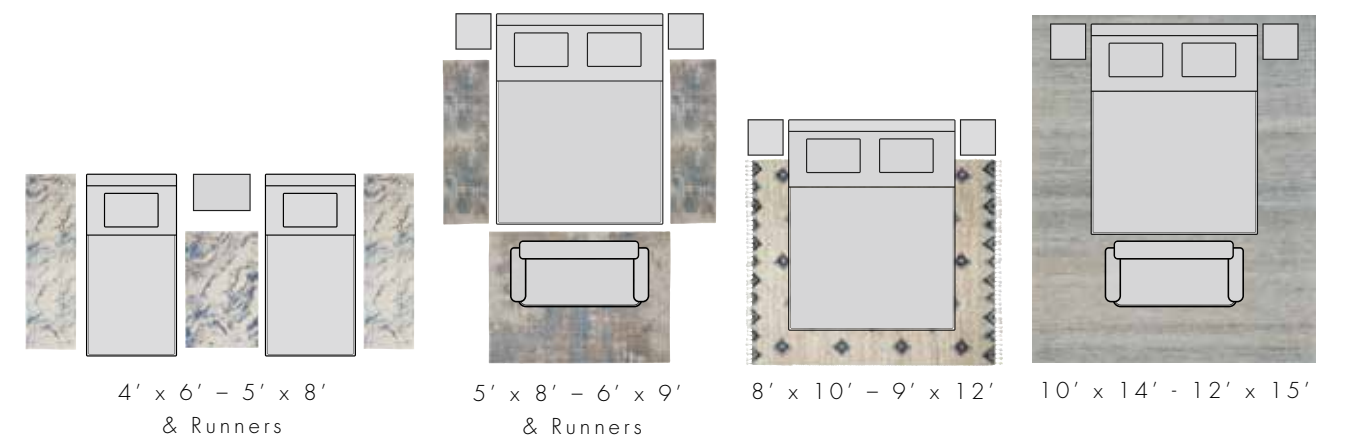
### LIVING ROOM



### DINING ROOM



### BEDROOM





A. AS301 CLAY | P.157  
 B. SH020 BLUE | P.157  
 C. GT037 CREAM | P.157  
 D. GT119 NATURAL THROW | P.159

ATW02 SEAFOAM/BRICK

# ARTWORKS COLLECTION

Nourison's Artworks Collection features an array of contemporary rugs with rich abstract colors combined with a thick, soft wool-blend pile for a modern statement piece that works in any room in the home. The velvety cut pile makes each rug exceptionally comfortable and durable, for an artistic decor accent that will last for years!

**STYLE**  
CONTEMPORARY DESIGN

**FIBER**  
80% NEW ZEALAND WOOL  
20% LUXCELLE™

**CONSTRUCTION**  
LOOM-WOVEN

**ORIGIN**  
CHINA

**AVAILABLE SIZES**

2 ft x 3 ft*	0.61m x 0.91m
5 ft 6 in. x 8 ft	1.68m x 2.44m
7 ft 9 in. x 9 ft 9 in.	2.36m x 2.97m
8 ft 6 in. x 11 ft 6 in.	2.59m x 3.51m
9 ft 6 in. x 12 ft 6 in.	2.90m x 3.81m

*All sizes approximate/Custom sizes available/\*Select designs only*



ATW01 NAVY/BRICK



ATW01 SLATE MULTICOLOR



ATW01 SLATE MULTICOLOR



ATW02 SEAFOAM/BRICK CLOSE-UP



ATW02 BLUE/GREY



ATW02 SEAFOAM/BRICK



ATW03 SILVER/GREY/YELLOW



ATW03 SLATE/BRICK



ATW04 MULTICOLOR



ATW05 IVORY/NAVY



ATW05 IVORY/NAVY





A. PD019 BLACK WHITE | P.157  
 B. PD280 WHITE | P.157

CRM03 EMBER GLOW

# CHROMA COLLECTION

The Chroma Collection of contemporary area rugs from Nourison is certain to infuse any interior with colorful energy. Daring, dynamic designs presented in vivid, larger-than-life color palettes create truly eye-catching effects, while the expertly loom-woven wool/nylon fabrications ensure long wear, easy care, and fabulous texture.

**STYLE**  
CONTEMPORARY DESIGN

**FIBER**  
80% WOOL  
20% NYLON

**CONSTRUCTION**  
LOOM-WOVEN

**ORIGIN**  
CHINA

**AVAILABLE SIZES**

4 ft x 6 ft	1.22m x 1.83m
5 ft 6 in. x 8 ft	1.68m x 2.44m
7 ft 9 in. x 9 ft 9 in.	2.36m x 2.97m
8 ft 6 in. x 11 ft 6 in.	2.59m x 3.51m
9 ft 9 in. x 12 ft 8 in.	2.97m x 3.86m

*All sizes approximate/Custom sizes available*



CRM01 AEGEAN



CRM04 LAVA FLOW



CRM01 AEGEAN CLOSE-UP



CRM05 CRIMSON TIDE CLOSE-UP



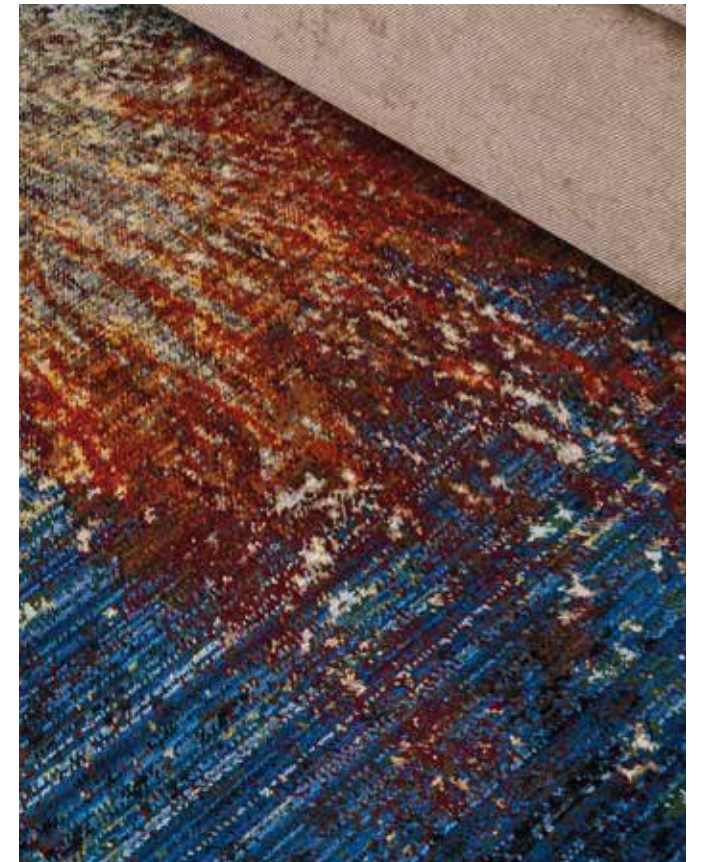
CRM05 CRIMSON TIDE



CRM03 EMBER GLOW



CRM02 RED FLARE



CRM02 RED FLARE CLOSE-UP

# GEMSTONE COLLECTION

Luster, dimension, and sparkling jewel tones set the stage for the lapidary elegance of Gemstone Collection area rugs. In shimmering colors and luscious textures, these exquisite rugs play with abstract patterns that hint at nature's inspiration.

**STYLE**  
CONTEMPORARY DESIGN

**FIBER**  
30% WOOL  
70% LUXCELLE™

**CONSTRUCTION**  
HAND TUFTED

**ORIGIN**  
INDIA

**AVAILABLE SIZES**

3 ft 9 in. x 5 ft 9 in.  
5 ft 6 in. x 7 ft 5 in.  
7 ft 9 in. x 9 ft 9 in.  
8 ft 6 in. x 11 ft 6 in.  
9 ft 9 in. x 13 ft 9 in.

1.14m x 1.75m  
1.68m x 2.26m  
2.36m x 2.97m  
2.59m x 3.51m  
2.97m x 4.19m

All sizes approximate

A. TR011 TURQUOISE SILVER | P.158  
B. AA242 IVORY | *kathy ireland*® Home | P.158  
C. TR011 TURQUOISE SILVER | P.158



GEM05 ALEXANDRITE



GEM01 FIRE/OPAL



GEM01 LAPIS



GEM01 LAPIS CLOSE UP



GEM05 SAPPHIRE CLOSE-UP



GEM02 TOURMALINE



GEM03 HEMATITE



GEM05 SAPPHIRE



GEM04 AMETHYST



GEM06 SMOKY QUARTZ CLOSE-UP



GEM06 JADE



GEM06 SMOKY QUARTZ



A. SH019 MUSTARD THROW | P.159  
 B. DL825 MUSTARD | P.157  
 C. DL506 SAND | P.157  
 D. DL506 CLAY | P.157

JA19 AQUA

# JAIPUR COLLECTION

Introduce a dramatic element of timeless beauty and elegance with this marvelous collection of luxurious Persian-design rugs. Each rug is hand-tufted into a lavish pile and treated with Nourison's unique herbal wash process to simulate the look and textural dimension of a priceless antique.

**STYLE**  
TRADITIONAL DESIGN

**FIBER**  
100% WOOL

**CONSTRUCTION**  
HAND TUFTED

**ORIGIN**  
INDIA

**AVAILABLE SIZES**

- 2 ft 4 in. x 8 ft Runner
- 3 ft 9 in. x 5 ft 9 in.
- 5 ft 6 in. x 8 ft 6 in.
- 6 ft Round
- 7 ft 9 in. x 9 ft 9 in.
- 8 ft Round
- 8 ft 3 in. x 11 ft 6 in.
- 9 ft 6 in. x 13 ft 6 in.

- 0.71m x 2.44m Runner
- 1.14m x 1.75m
- 1.68m x 2.59m
- 1.83m Round
- 2.36m x 2.97m
- 2.44m Round
- 2.51m x 3.51m
- 2.90m x 4.11m

*All sizes approximate/Custom sizes available*





JA12 GREEN



JA13 RUST



JA13 RUST CLOSE-UP



JA18 BLACK



JA17 BURGUNDY



JA18 BLACK



JA25 MULTICOLOR CLOSE-UP



JA19 AQUA



JA23 BROWN



JA25 MULTICOLOR



JA33 BRICK



JA35 BRICK



JA36 RED



JA41 SILVER



JA43 FLAME



JA41 SILVER CLOSE-UP

# LIVING TREASURES COLLECTION

Bring a rare element of history, luxury, and artistic sensibility into your home with this fine collection. Traditional centuries-old Persian designs are featured in a dynamic interplay of patterns, colors, tones, and textures. Turn any room into a sophisticated living area with these exquisitely crafted rugs.

**STYLE**  
TRADITIONAL DESIGN

**FIBER**  
100% NEW ZEALAND WOOL

**CONSTRUCTION**  
LOOM-WOVEN

**ORIGIN**  
CHINA

## AVAILABLE SIZES

2 ft 6 in. x 4 ft 3 in.	0.76m x 1.29m
2 ft 6 in. x 8 ft Runner	0.76m x 2.44m
2 ft 6 in. x 12 ft Runner	0.76m x 3.66m
3 ft 6 in. x 5 ft 6 in.	1.07m x 1.68m
5 ft 10 in. Round	1.78m Round
5 ft 6 in. x 8 ft 3 in.	1.68m x 2.51m
7 ft 10 in. Round	2.39m Round
7 ft 6 in. x 9 ft 6 in.	2.29m x 2.90m
8 ft 3 in. x 11 ft 3 in.	2.51m x 3.43m
9 ft 9 in. x 13 ft 9 in.	2.97m x 4.19m

All sizes approximate



L105 BEIGE



L116 IVORY/AQUA CLOSE-UP



L115 AQUA/IVORY



L115 GREY/IVORY



L116 IVORY/AQUA



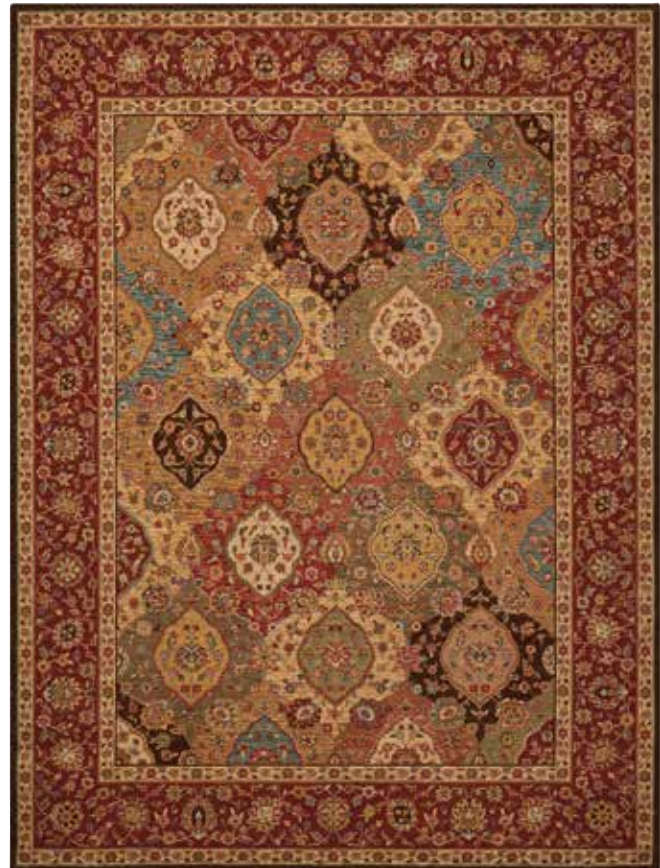
L116 GREY/IVORY



LI01 RUST



LI02 MULTICOLOR



LI03 MULTICOLOR



LI04 GREEN



LI01 RUST CLOSE-UP



LI04 BROWN



LI04 IVORY/RED



LI05 AQUA



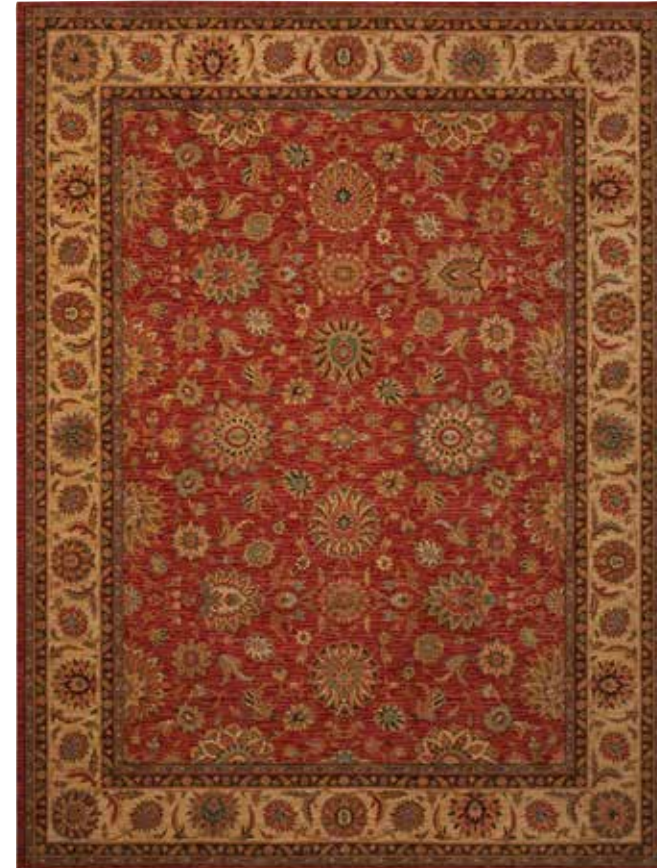
LI05 BLACK



LI04 IVORY/BLACK



LI04 IVORY



LI05 RUST



LI05 BEIGE



# MAJESTIC COLLECTION

The Majestic Collection from Nourison features dramatic, ornate designs of authentic Persian rugs, with rich colors and textures that will make an immediate impression in any room. Each rug features luxurious cut pile woven from New Zealand wool and nylon, with traditional Oushak medallions and all-over vines and blooms.

**STYLE**  
TRADITIONAL DESIGN

**FIBER**  
80% NEW ZEALAND WOOL  
20% NYLON

**CONSTRUCTION**  
LOOM-WOVEN

**ORIGIN**  
CHINA

**AVAILABLE SIZES**

5 ft 6 in. x 8 ft	1.68m x 2.44m
7 ft 9 in. x 9 ft 9 in.	2.36m x 2.97m
8 ft 6 in. x 11 ft 6 in.	2.59m x 3.51m
9 ft 6 in. x 12 ft 8 in.	2.90m x 3.86m

All sizes approximate/Custom sizes available

A. DC142 IVORY | P.157  
B. JB073 GOLD | P.157  
C. DL005 CHARCOAL | P.157  
D. MD201 CHARCOAL THROW | P.159



MST01 BLACK



MST04 RED



MST03 SAND



MST05 RED



MST05 RED CLOSE-UP



MST03 SAND CLOSE-UP



MST01 BEIGE/BLUE



MST01 BLACK



MST01 BEIGE/BLUE



MST03 LIGHT BLUE CLOSE-UP



MST02 DENIM BLUE



MST03 LIGHT BLUE

# NOURISON 2000 COLLECTION

The Nourison 2000 Collection proudly projects the rich colors and patterns of the traditional Persian rug. The dense, luxurious pile handcrafted from pure New Zealand wool and silk accents results in a rug of unmatched durability and opulence, making it an heirloom that will add years of beauty and vintage style to your home.

**STYLE**  
TRADITIONAL DESIGN

**FIBER**  
80% NEW ZEALAND WOOL  
20% SILK

**CONSTRUCTION**  
HAND-TUFTED

**ORIGIN**  
CHINA

#### AVAILABLE SIZES

2 ft x 3 ft	0.61m x 0.91m
2 ft 3 in. x 8 ft Runner	0.69m x 2.44m
2 ft 6 in. x 12 ft Runner	0.76m x 3.66m
2 ft 6 in. x 4 ft 3 in.	0.76m x 1.29m
3 ft 9 in. x 5 ft 9 in.	1.14m x 1.75m
4 ft Round	1.22m Round
5 ft 6 in. x 8 ft 6 in.	1.68m x 2.59m
6 ft Round	1.83m Round
7 ft 6 in. x 9 ft 6 in. Oval	2.29m x 2.90m
7 ft 9 in. x 9 ft 9 in.	2.36m x 2.97m
8 ft Round	2.44m Round
8 ft 6 in. x 11 ft 6 in.	2.59m x 3.51m
9 ft 9 in. x 13 ft 9 in.	2.97m x 4.19m
10 ft Octagon*	3.05m Octagon
12 ft x 15 ft*	3.66m x 4.57m

All sizes approximate/ Custom sizes available/\*\*Select designs only



A. SZ007 BEIGE THROW | P.159  
B. AS301 CHARCOAL | P.157  
C. F7101 BEIGE | P.157

2022 NAVY



2002 BURGUNDY



2003 OLIVE



2022 BLACK



2022 LACQUER



2207 BEIGE



2207 BEIGE CLOSE-UP



2022 NAVY



2022 NAVY CLOSE-UP



2091 MUSHROOM CLOSE-UP



2071 CAMEL



2091 MUSHROOM



2204 MIDNIGHT



2206 BROWN



2233 BLACK



2210 BLUE



2017 BLACK



2023 IVORY



2210 BLUE CLOSE-UP





2028 BLACK



2360 BEIGE



2028 BLACK



A. AS263 CLAY POUF | P.159  
 B. AS263 SAGE POUF | P.159  
 C. QY023 BEIGE | P.157

PSA03 DENIM

# PARISA COLLECTION

The Parisa Collection offers a variety of designs ranging from traditional Persian to French Country to Moroccan. With a soft and inviting medium-thick pile, each rug works as beautifully in the traditional or contemporary home as it does with modern farmhouse or eclectic and bohemian décor.

**STYLE**  
TRADITIONAL DESIGN

**FIBER**  
100% NEW ZEALAND WOOL

**CONSTRUCTION**  
LOOM-WOVEN

**ORIGIN**  
CHINA

**AVAILABLE SIZES**

- 2 ft x 3 ft
  - 2 ft 3 in. x 10 ft Runner
  - 5 ft 3 in. x 7 ft 5 in.
  - 7 ft 9 in. x 9 ft 9 in.
  - 8 ft 6 in. x 11 ft 6 in.
  - 9 ft 9 in. x 13 ft 9 in.
  - 12 ft x 15 ft
- All sizes approximate*

- 0.61m x 0.91m
- 0.69m x 3.05m
- 1.60m x 2.26m
- 2.36m x 2.97m
- 2.59m x 3.51m
- 2.97m x 4.19m
- 3.66m x 4.57m



PSA02 BRICK CLOSE-UP



PSA01 BRICK/IVORY



PSA01 GREY/SAGE



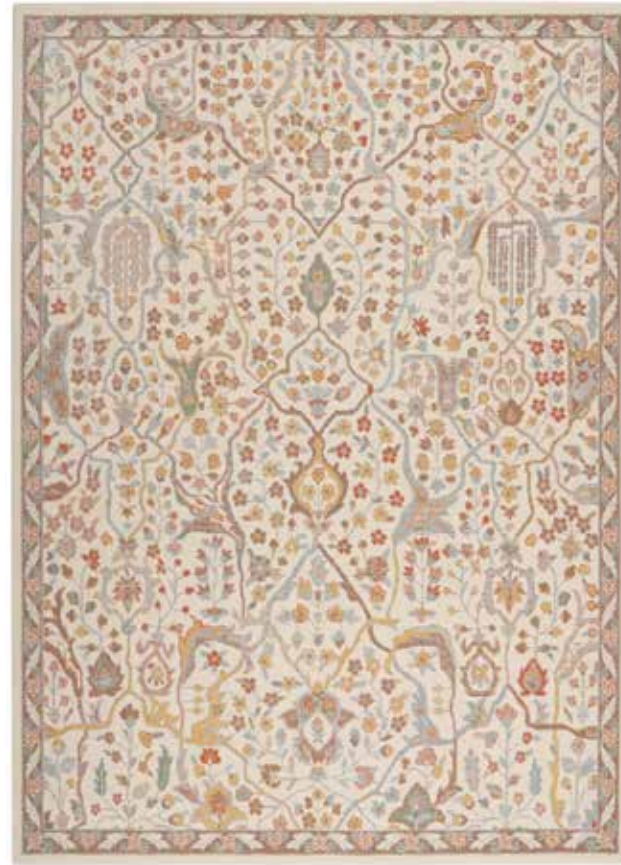
PSA02 BRICK



PSA03 DENIM



PSA03 GREY



PSA04 BEIGE



PSA05 GREY MULTICOLOR



PSA05 MULTICOLOR



PSA05 GREY MULTICOLOR CLOSE-UP



PSA06 DENIM MULTICOLOR



PSA07 GOLD/BRICK

PSA07 GOLD/BRICK



A. AC032 GOLD | P.158  
 B. RC223 MUSTARD | P.157  
 C. SS910 YELLOW | P.158  
 D. AZ009 YELLOW | P.158

PR519 GREY/GOLD

# PRISMATIC COLLECTION

Designed to captivate, the Prismatic Collection from Nourison brings charismatic color and daringly dimensional texture to the modern home. Expertly hand-tufted from the finest New Zealand wool interwoven with silk-like Luxcelle™, these contemporary rugs blend distinctive style and lasting comfort exquisitely.

**STYLE**  
CONTEMPORARY DESIGN

**FIBER**  
50% NEW ZEALAND WOOL  
50% LUXCELLE™

**CONSTRUCTION**  
HAND TUFTED

**ORIGIN**  
CHINA

**AVAILABLE SIZES**

2 ft x 3 ft	0.61m x 0.91m
3 ft 9 in. x 5 ft 9 in.	1.14m x 1.75m
5 ft 6 in. x 7 ft 5 in.	1.68m x 2.26m
7 ft 9 in. x 9 ft 9 in.	2.36m x 2.97m
8 ft 6 in. x 11 ft 6 in.	2.59m x 3.51m
9 ft 9 in. x 13 ft 9 in.	2.97m x 4.19m
12 ft x 15 ft*	3.66m x 4.57m

*All sizes approximate/Custom sizes available/\*Select designs only*



PRS09 SILVER/BLUE



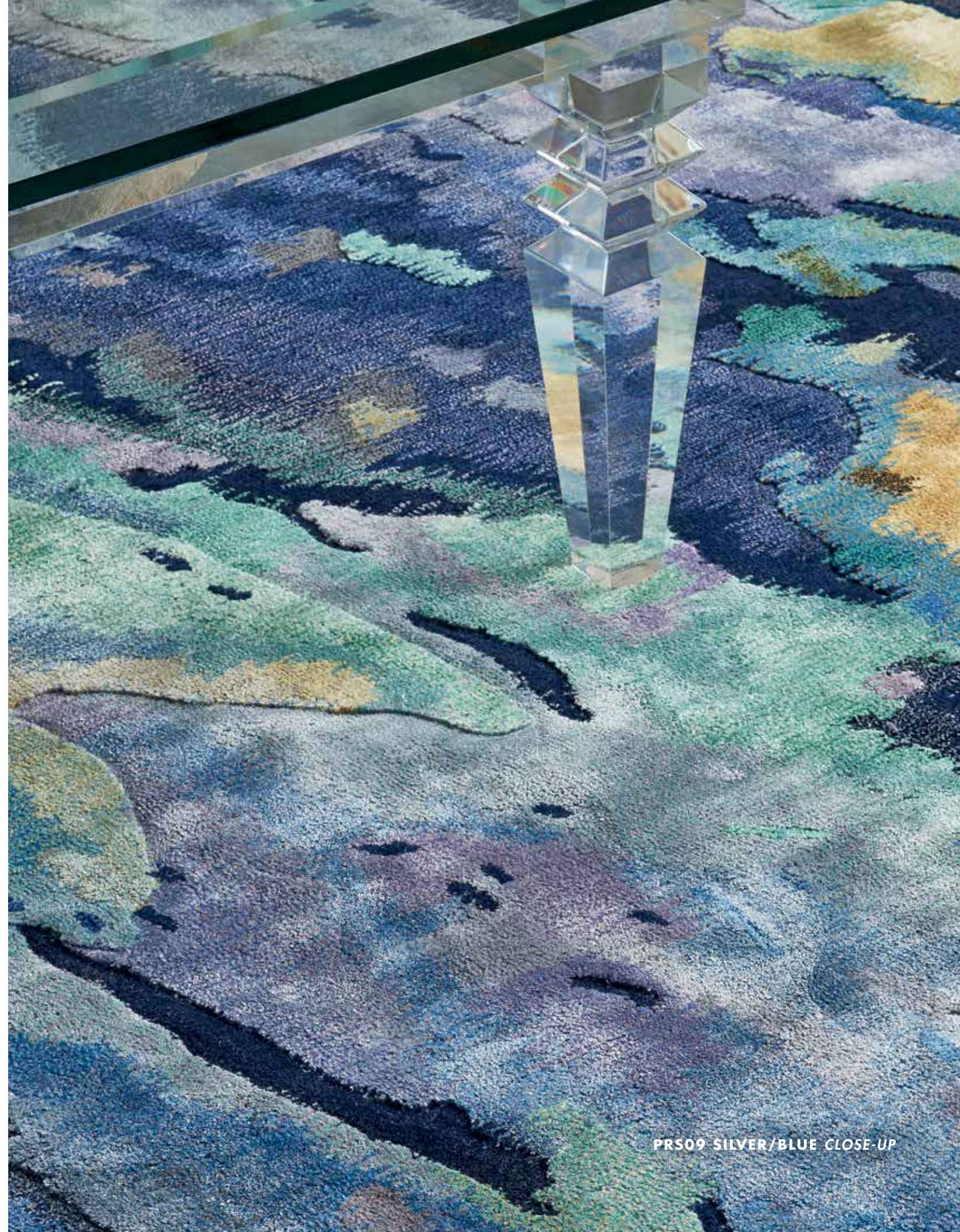
PRS10 BLUE/GREY



PRS11 GREY MULTICOLOR



PRS12 SILVER/GREY



PRS09 SILVER/BLUE CLOSE-UP



PRS13 BLUE/FLAME



PRS04 SEAGLASS



PRS13 BLUE/FLAME





PRS16 SEAFOAM CLOSE-UP



PRS16 SEAFOAM



PRS06 AQUA



PRS09 MULTICOLOR



PRS09 MULTICOLOR CLOSE-UP



PRS08 MULTICOLOR



PRS02 BEIGE/SILVER



PRS08 MULTICOLOR



PRS05 BLUE



PRS05 BLUE



PRS05 SILVER/CLOUD



PRS20 GREY/LILAC MULTICOLOR CLOSE-UP



PRS19 GREY/GOLD



PRS19 SEAFOAM/SILVER



PRS20 GREY/LILAC MULTICOLOR



PRS18 MULTICOLOR



PRS17 DENIM



PRS14 GREY/SLATE



PRS15 BEIGE MULTICOLOR



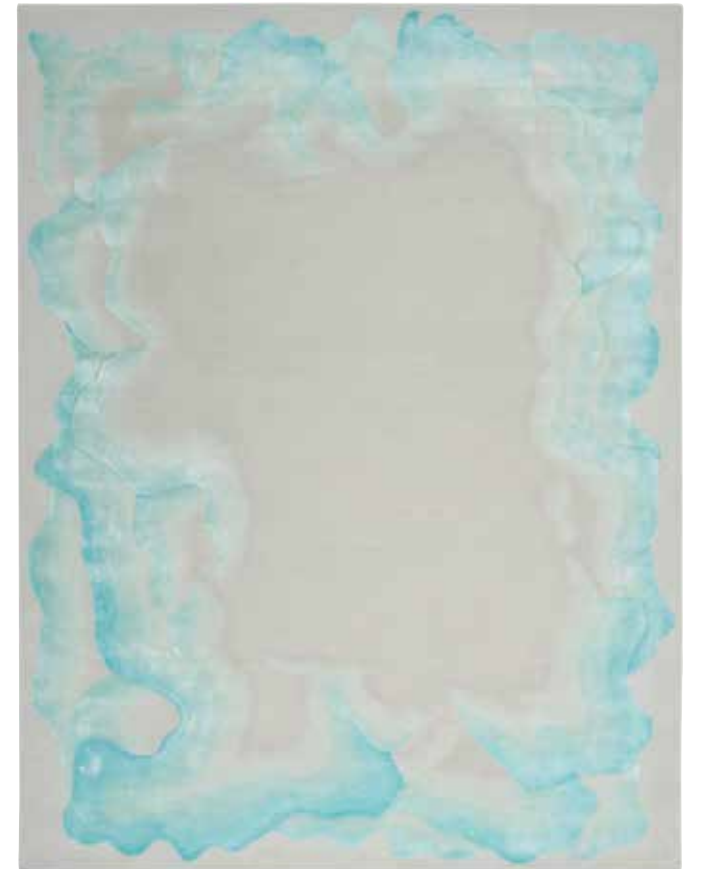
PRS15 BEIGE MULTICOLOR *CLOSE-UP*



PRS17 DENIM *CLOSE-UP*



PRS22 SEA MIST/BLUE



PRS22 SEA MIST/BLUE



PRS23 BLACK MULTICOLOR



A. A0027 GREY PEWTER | P.158  
 B. SS905 CHARCOAL THROW | P.159  
 C. LH065 GREY | P.158  
 D. ES016 SILVER WHITE | P.158

STN09 GREY/NAVY

# STARRY NIGHTS COLLECTION

Harkening back to old-world, Persian opulence from centuries ago, the new Starry Nights collection features traditional area rugs with vintage allure. Classic, framed patterns with intricately carved designs showcase elegant color pairings, faded to resemble a priceless family heirloom.

**STYLE**  
TRADITIONAL DESIGN

**FIBER**  
80% LUXCELLE™  
20% SHRINK ACRYLIC

**CONSTRUCTION**  
LOOM-WOVEN

**ORIGIN**  
TURKEY

**AVAILABLE SIZES**

5 ft 3 in. x 7 ft 3 in.  
 8 ft x 10 ft  
 8 ft 6 in. x 11 ft 6 in.  
 9 ft 10 in. x 12 ft 6 in.

1.60m x 2.21m  
 2.44m x 3.05m  
 5.59m x 3.51m  
 3.00m x 3.81m

*All sizes approximate*



STN08 GREY CLOSE-UP



STN08 GREY



STN08 LIGHT BLUE



STN09 GREY/NAVY



STN10 GREY/NAVY





STN11 GREY/BLUE



STN12 BLUSH



STN12 BLUSH CLOSE UP



STN04 CREAM/GREY CLOSE-UP



STN01 CREAM/BLUE



STN02 CREAM/GREY



STN04 CREAM/GREY



STN03 SILVER/CREAM



STN07 BLUSH MULTICOLOR



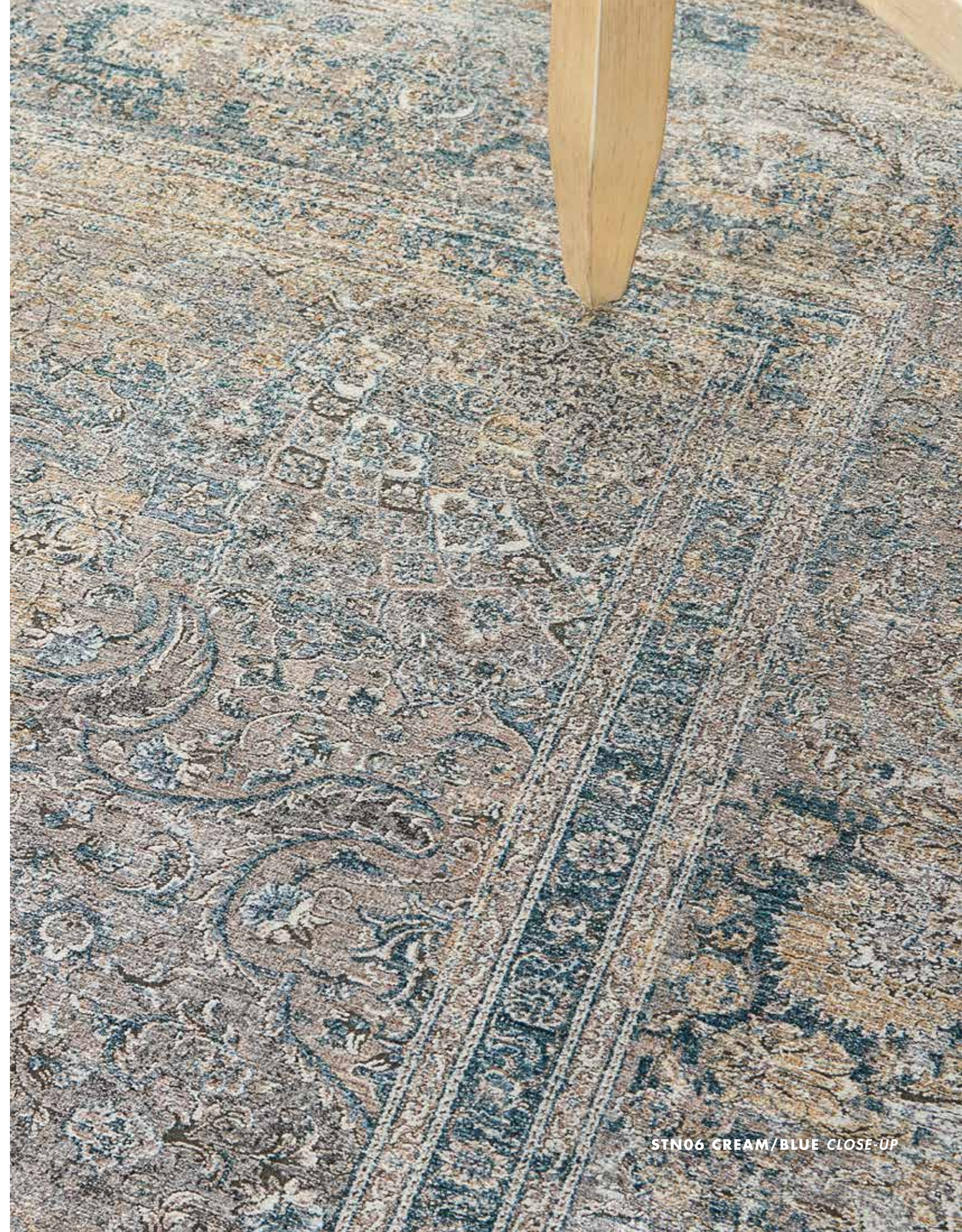
STN07 BLUE



STN05 CHARCOAL/CREAM



STN06 CREAM/BLUE



STN06 CREAM/BLUE CLOSE-UP



- A. CR420 MULTICOLOR | P.158
- B. SH018 MUSTARD | P.158
- C. CS018 GREY | P.158
- D. E5000 YELLOW | P.158
- E. E5000 SILVER | P.158
- F. AC234 GOLD | P.158
- G. SH020 MUSTARD | P.158

**TWI22 NAVY/GOLD**

# TWILIGHT COLLECTION

Ideal for the fashion-forward decorator who is looking for an original and modern look in floor coverings, Twilight delivers artful sophistication in a choice of patterned and abstract designs. Imbued with subtle sheen, these scintillating wool-blend rugs are a perfect complement to today's leading trends in contemporary furnishings.

**STYLE**  
TRANSITIONAL DESIGN

**FIBER**  
40% WOOL  
60% LUXCELLE™

**CONSTRUCTION**  
LOOM-WOVEN

**ORIGIN**  
CHINA

**AVAILABLE SIZES**

2 ft x 3 ft	0.61m x 0.91m
2 ft 3 in. x 3 ft	0.69m x 0.91m
5 ft 6 in. x 8 ft	1.68m x 2.44m
7 ft 9 in. x 9 ft 9 in.	2.36m x 2.97m
8 ft Round	2.44m x 2.44m
8 ft 6 in. x 11 ft 6 in.	2.59m x 3.51m
9 ft 9 in. x 13 ft 9 in.	2.97m x 4.19m
12 ft x 15 ft	3.66m x 4.57m

*All sizes approximate/Custom sizes available*

*Select styles available in **FIFTY TO INFINITY***



TWI01 SILVER



TWI02 IVORY



TWI06 BONE



TWI06 IVORY/GREEN



TWI03 IVORY/GREY



TWI05 SLATE



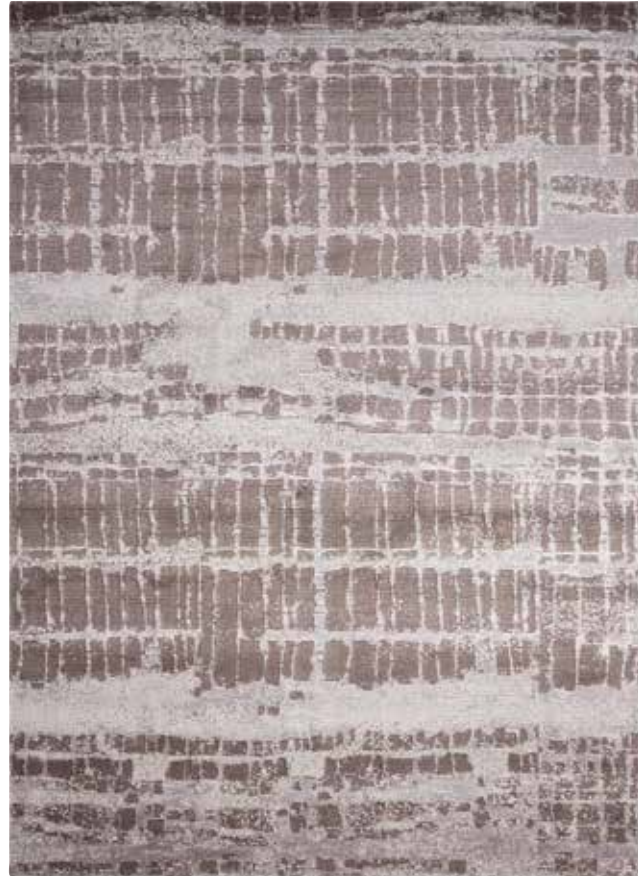
TWI07 SEA MIST



TWI08 CREAM



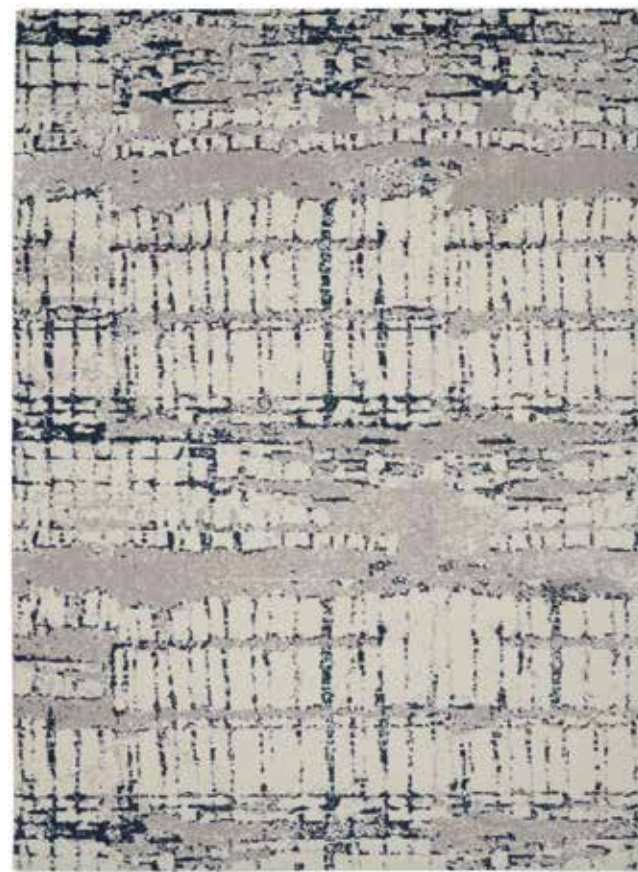
TWI09 IVORY



TWI10 HAZEL



TWI10 IVORY



TWI10 IVORY/NAVY



TWI10 IVORY/NAVY CLOSE-UP



TW111 SEAFOAM



TW111 FLINT



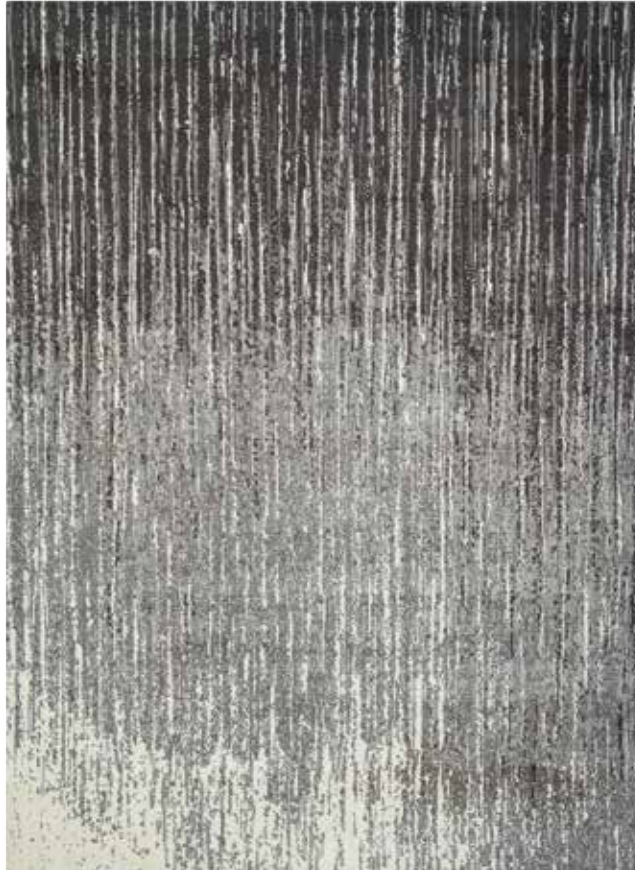
TW113 IVORY MULTICOLOR



TW113 ONYX



TW112 IVORY/GREY



TW114 SMOKE



TW113 GREY MULTICOLOR



TW113 GREY MULTICOLOR *CLOSE-UP*



TW115 NAVY CLOSE-UP



TW115 GREY



TW115 IVORY/GREY



TW115 NAVY



TW117 MOON





TWI18 STORM



TWI19 MULTICOLOR



TWI22 BLUE/GREY



TWI22 NAVY/GOLD



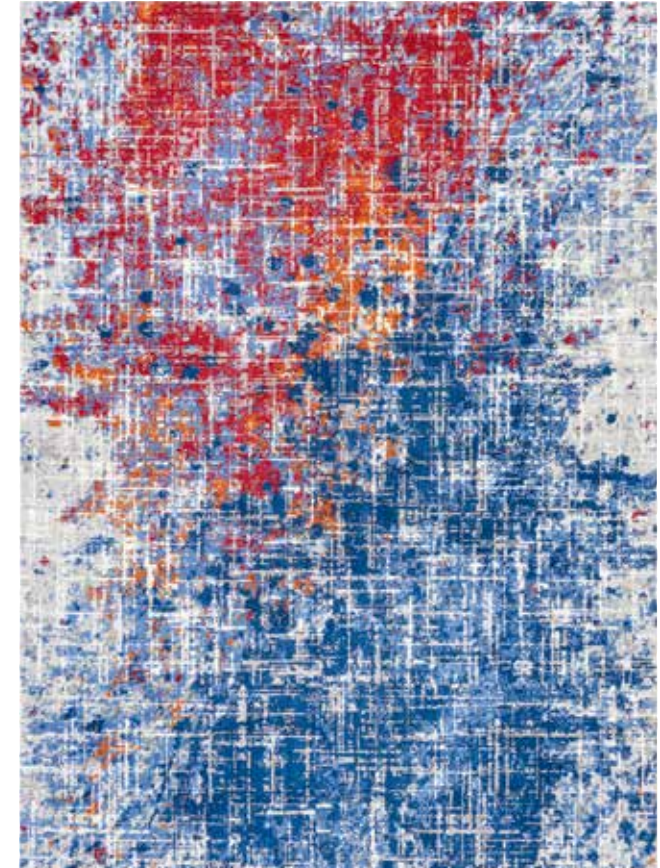
TWI20 GREY/BLUE



TWI21 GREY/RED



TWI24 BLUE/IVORY



TWI25 RED/BLUE



TWI26 IVORY MULTICOLOR



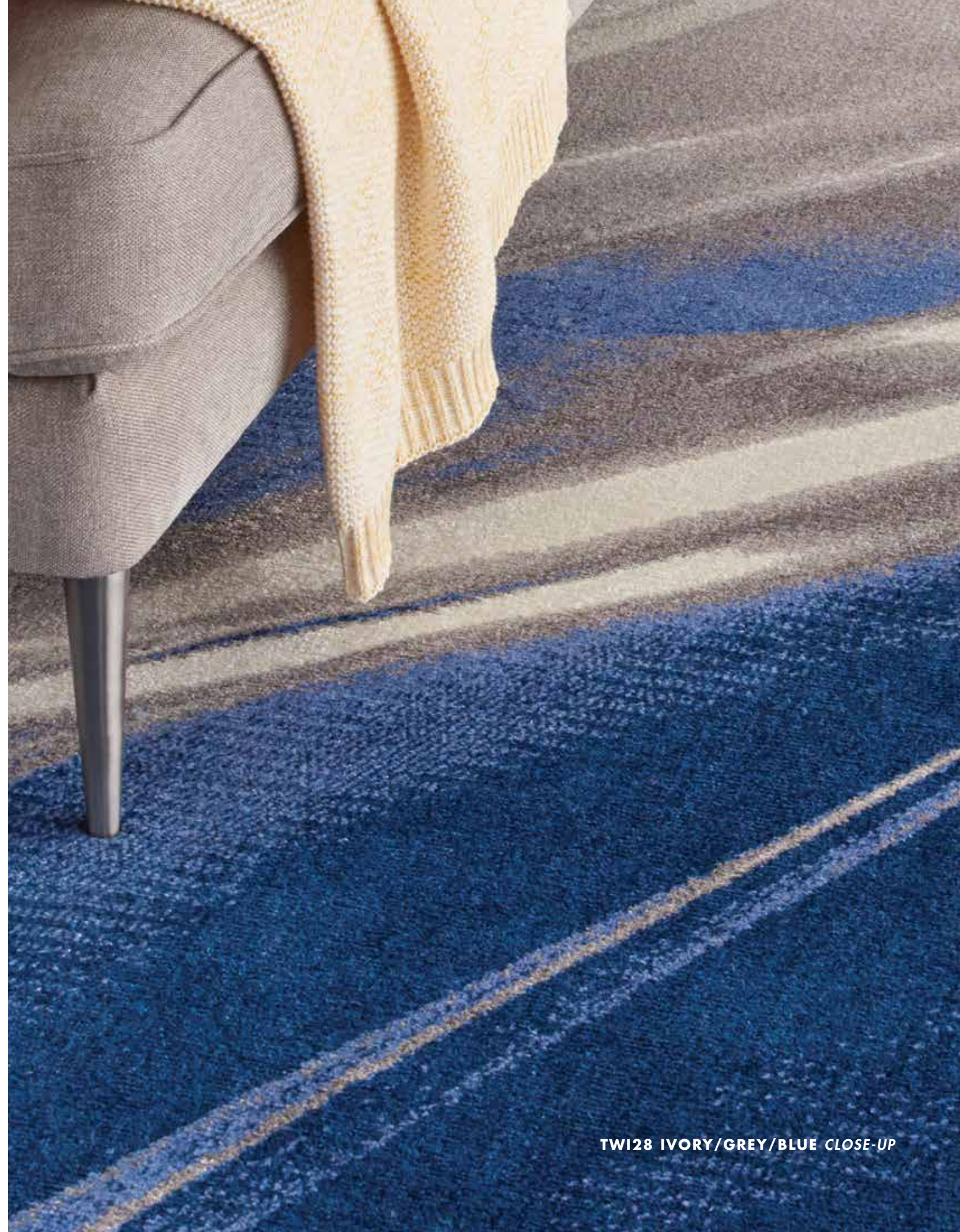
TWI27 IVORY/BLUE



TWI28 IVORY/GREY/BLUE



TWI29 IVORY/BLUE



TWI28 IVORY/GREY/BLUE CLOSE-UP



MSA01 AMBER

# Calvin Klein

## MESA COLLECTION

A MIX OF ECO-FRIENDLY FIBERS CREATES A TEXTURED AESTHETIC. THIS HANDWOVEN COLLECTION FEATURES HAND-DYED YARNS IN CLEAN, NEUTRAL TONES.

**STYLE**  
CONTEMPORARY DESIGN

**FIBER**  
JUTE & BAMBOO BLEND

**CONSTRUCTION**  
HAND-WOVEN

**ORIGIN**  
INDIA

### AVAILABLE SIZES

2 FT 3 IN. X 3 FT	0.69M X 0.91M
2 FT 3 IN. X 7 FT 5 IN.	0.69M X 2.26M
4 FT X 6 FT	1.22M X 1.83M
5 FT 6 IN. X 7 FT 5 IN.	1.68M X 2.26M
8 FT X 10 FT	2.44M X 3.05M
9 FT X 12 FT	2.74M X 3.66M
10 FT X 14 FT	3.05M X 4.27M

All sizes approximate/Custom sizes available

MESA COLLECTION



MSA01 HEMATITE

Calvin Klein



MSA01  
AMBER



MSA01  
BARITE



MSA01  
FOSSIL



MSA01  
GYPSUM



MSA01  
HEMATITE

Calvin Klein

# GRADIENT COLLECTION

A SPECTRUM OF LUMINOUS WARM NEUTRAL TONES IN A LUSH, LOW PILE IS COMBINED WITH ABSTRACT DESIGN IN AN EXPRESSION OF REFINED SIMPLICITY. ENHANCED WITH PATTERN AND TEXTURE, THE EFFECTS ACHIEVED IN THE COLOR PLAY GIVE THIS UNIQUE COLLECTION ITS NAME AND ARTISTIC APPEAL.

**STYLE**  
CONTEMPORARY DESIGN

**FIBER**  
WOOL & LUXCELLE™

**CONSTRUCTION**  
LOOM-WOVEN

**ORIGIN**  
CHINA

**AVAILABLE SIZES**

5 FT 6 IN. X 8 FT	1.68M X 2.44M
7 FT 9 IN. X 9 FT 9 IN.	2.36M X 2.97M
8 FT 6 IN. X 11 FT 6 IN.	2.59M X 3.51M
9 FT 9 IN. X 13 FT 9 IN.	2.97M X 4.19M

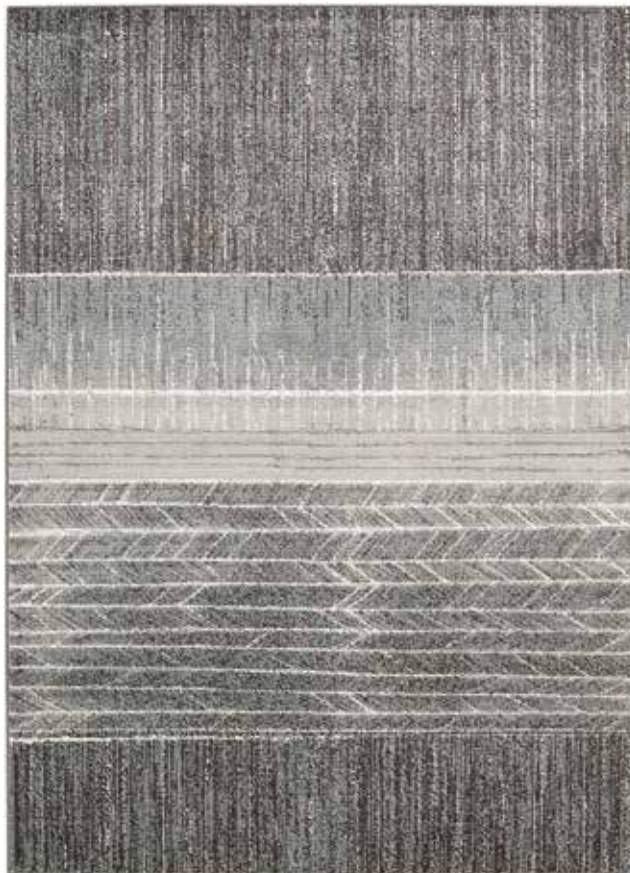
All sizes approximate/Custom sizes available



GDT04 BASALT



GDT03 DRIFT



GDT04 BASALT

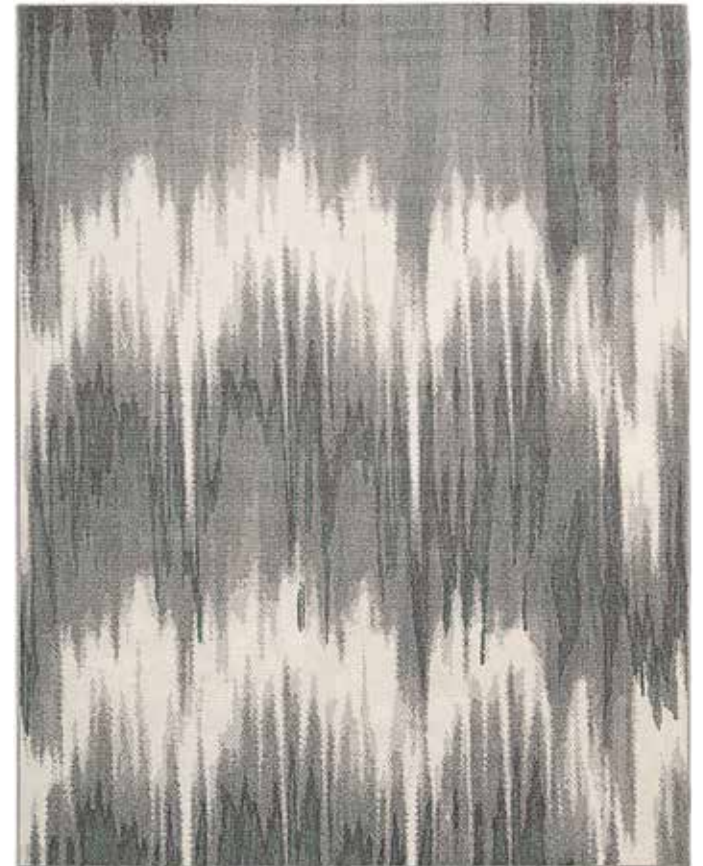


GDT03 DRIFT

GRADIENT COLLECTION

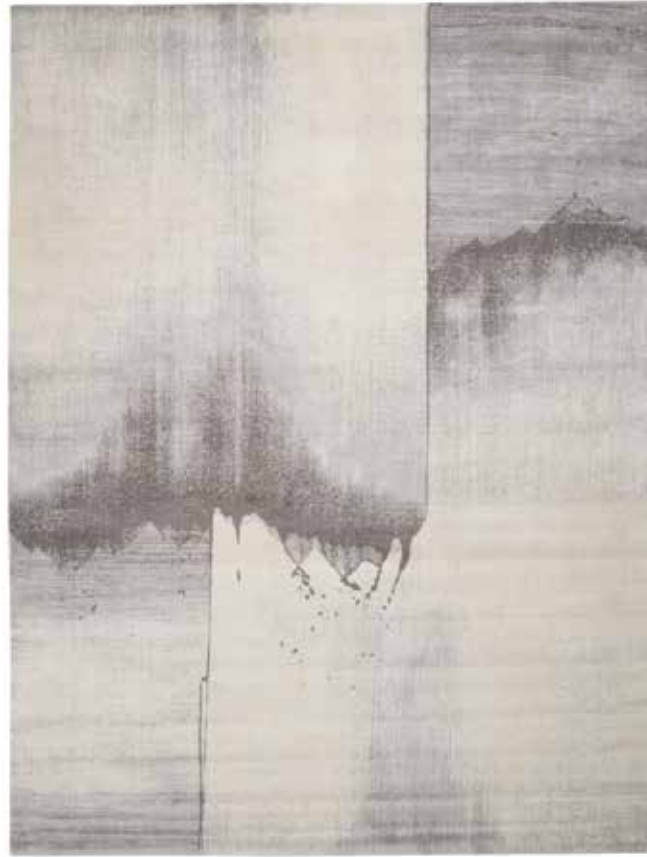


GDT01 GRANITE

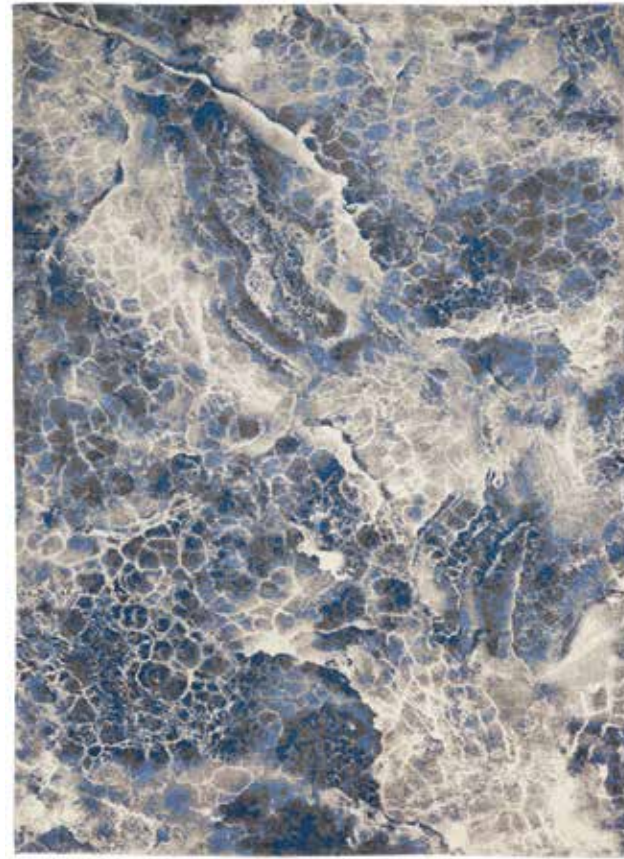


GDT02 BALTIC

GDT01 GRANITE



GDT05 SILICA



GDT06 BLUE/GREY



GDT06 GREY



GDT06 GREY CLOSE-UP



GDT05 SILICA



# Calvin Klein

## BALIAN COLLECTION

THE CALVIN KLEIN BALIAN COLLECTION USES EXCITING TROMPE L'OEIL DESIGNS TO CREATE IMPRESSIONS OF DEPTH AND DIMENSIONALITY. THESE SUBTLE YET VIVID AREA RUGS BRING ENERGY AND PERSONALITY TO ANY ROOM. EACH LOOM-WOVEN, LOW-PILE RUG FEATURES SUMPTUOUS CARVED DETAILS, FINELY FRINGED EDGES AND A SILK-LIKE SHEEN. FOR THE ULTIMATE STATEMENT IN CONTEMPORARY HOME DESIGN, SELECT AN EXCEPTIONAL CK BALIAN AREA RUG. AVAILABLE IN TODAY'S MODERN-NEUTRAL PALETTE.

**STYLE**  
CONTEMPORARY DESIGN

**FIBER**  
VISCOSE & ACRYLIC

**CONSTRUCTION**  
LOOM-WOVEN

**ORIGIN**  
TURKEY

**AVAILABLE SIZES**

5 FT 3 IN. X 7 FT 3 IN.  
8 FT X 10 FT  
9 FT X 12 FT  
10 FT X 13 FT 2 IN.

1.60M X 2.21M  
2.44M X 3.05M  
2.74M X 3.66M  
3.05M X 4.01M

All sizes approximate



CK54 BLUE



CK50 SILVER/GREY



CK52 GREY



CK50 SILVER/GREY

BALIAN COLLECTION



CK51 GREY/BLACK



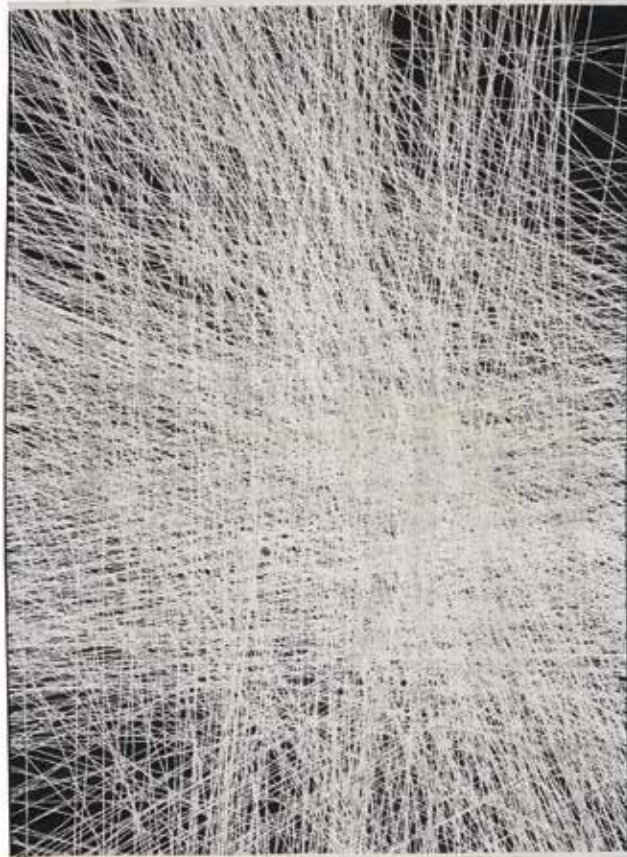
CK51 GREY/BLACK



CK53 GREY/BLACK



CK56 SILVER/BLACK



CK55 BLACK/SILVER



CK55 BLACK/SILVER



CK54 BLUE



CK54 BLUE CLOSE-UP

# Calvin Klein

## HALO COLLECTION

NATURAL, CALMING AND MODERN. THE CALVIN KLEIN HALO COLLECTION BRINGS A GROUNDED FEELING TO THE CONTEMPORARY HOME. EACH RUG IS HANDMADE OF SPACE-DYED WOOL YARNS IN COOL NEUTRAL TONES. THESE LOW-PROFILE, MINIMALIST RUGS ADD AN EFFORTLESSLY POLISHED TOUCH IN ANY SPACE.

**STYLE**  
CONTEMPORARY DESIGN

**FIBER**  
WOOL

**CONSTRUCTION**  
HAND-LOOMED

**ORIGIN**  
INDIA

**AVAILABLE SIZES**

4 FT X 6 FT	1.22M X 1.83M
5 FT 3 IN. X 7 FT 3 IN.	1.60M X 2.21M
8 FT X 10 FT	2.44M X 3.05M

All sizes approximate/Custom sizes available



HALO1 DENIM

HALO COLLECTION

Calvin Klein



HALO1  
DENIM



HALO1  
CHARCOAL



HALO1  
GREY



HALO1  
IVORY



HALO1  
BEIGE

HALO1 CHARCOAL

Calvin Klein

# PRETORIA COLLECTION

THE CALVIN KLEIN PRETORIA COLLECTION BRINGS AN INVITING, LUSH SOFTNESS INTO YOUR HOME. THE NEUTRAL TONES MATCH ANY DÉCOR AND THE MOSAIC PATTERN WITH SUBTLE SHEEN GIVES ANY ROOM A CLEAN, MODERN ACCOMPANIMENT.

**STYLE**  
CONTEMPORARY DESIGN

**FIBER**  
MOHAIR WOOL

**CONSTRUCTION**  
HAND-WOVEN

**ORIGIN**  
INDIA

**AVAILABLE SIZES**

2 FT X 3 FT	0.61M X 0.91M
5 FT 6 IN. X 8 FT	1.68M X 2.44M
8 FT X 10 FT	2.44M X 3.05M
9 FT X 12 FT	2.74M X 3.66M
10 FT X 14 FT	3.05M X 4.27M

All sizes approximate



CK890 IVORY

PRETORIA COLLECTION

Calvin Klein



CK890  
BEIGE



CK890  
BLUE



CK890  
IVORY



CK890  
STONE

CK890 BEIGE



Calvin Klein

# KATHMANDU COLLECTION

THE CALVIN KLEIN KATHMANDU COLLECTION INVITES THE OUTDOORS INTO YOUR LIVING ROOM OR BEDROOM WITH HAND-KNOTTED NATURAL FIBERS FOR A TEXTURED FEEL AND SOFT EARTH TONES THAT COMPLEMENT ANY LIVING SPACE.

**STYLE**  
CONTEMPORARY DESIGN

**FIBER**  
WOOL & JUTE BLEND

**CONSTRUCTION**  
TIBETAN HAND-KNOTTED

**ORIGIN**  
INDIA

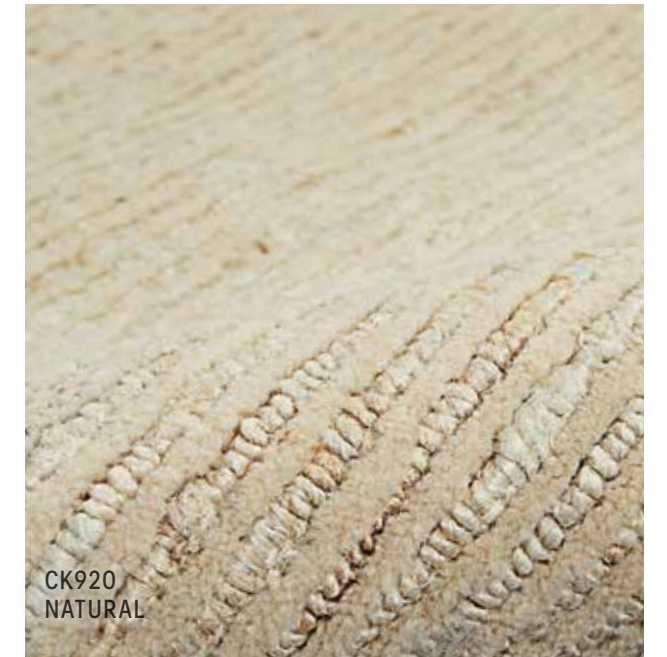
**AVAILABLE SIZES**

2 FT X 3 FT	0.61M X 0.91M
2 FT 3 IN. X 7 FT 5 IN. RUNNER	0.69M X 2.26M
4 FT X 6 FT	1.22M X 1.83M
5 FT 6 IN. X 7 FT 5 IN.	1.68M X 2.26M
8 FT X 10 FT	2.44M X 3.05M
9 FT X 12 FT	2.74M X 3.66M
10 FT X 14 FT	3.05M X 4.27M

All sizes approximate/Custom sizes available



CK920 GREY



CK920  
NATURAL



CK920  
GREY

CK920 NATURAL

# Calvin Klein

## AGADIR COLLECTION

THE CALVIN KLEIN AGADIR COLLECTION FEATURES PLUSH, BERBER RUGS THAT CAN EASILY SERVE AS THE UNIFYING COMPONENT OF ANY ROOM. THE NEUTRAL GRADIENT SHADES COMPLEMENT A WIDE RANGE OF FURNITURE STYLES FROM TRADITIONAL WOODS, TO MODERN METALS AND GLASS.

### STYLE

CONTEMPORARY DESIGN

### FIBER

WOOL & RAYON BLEND

### CONSTRUCTION

HAND-KNOTTED

### ORIGIN

INDIA

### AVAILABLE SIZES

2 FT X 3 FT

5 FT 3 IN. X 7 FT 3 IN.

8 FT X 10 FT

9 FT X 12 FT

10 FT X 14 FT

0.61M X 0.91M

1.61M X 2.22M

2.44M X 3.04M

2.74M X 3.65M

3.04M X 4.26M

All sizes approximate/Custom sizes available





CK930 BEIGE

AGADIR COLLECTION



CK930 SILVER

# Calvin Klein



CK930 BEIGE



CK930 SILVER

Calvin Klein

# RIVERSTONE COLLECTION

CALVIN KLEIN MINIMALIST STYLE MEETS MAXIMALIST TEXTURE. THESE AREA RUGS START WITH WOOL THAT IS DYED IN SOFT NEUTRALS, AND THEN EXPERTLY HAND-WOVEN IN A LARGE-LOOP PEBBLE WEAVE. THIS VERSATILE COLLECTION COMPLEMENTS A WIDE RANGE OF DÉCORS, FROM TRADITIONAL TO BOHO-ECLECTIC. FOR A SUBTLE STATEMENT IN ANY ROOM WHERE YOU WANT TO RELAX IN COMFORT AND STYLE.

**STYLE**  
CONTEMPORARY DESIGN

**FIBER**  
WOOL

**CONSTRUCTION**  
HAND-WOVEN

**ORIGIN**  
INDIA

**AVAILABLE SIZES**

2 FT X 3 FT	0.61M X 0.91M
4 FT X 6 FT	1.22M X 1.83M
5 FT 3 IN. X 7 FT 5 IN.	1.60M X 2.26M
8 FT X 10 FT	2.44M X 3.05M
9 FT X 12 FT	2.74M X 3.66M
10 FT X 14 FT	3.05M X 4.27M

All sizes approximate/Custom sizes available



CK940 GREY/IVORY

RIVERSTONE COLLECTION

Calvin Klein



CK940  
GREY/IVORY



CK940  
IVORY



CK940  
MOCHA

CK940 IVORY



Calvin Klein

# NORTHWEST COLLECTION

THE NORTHWEST COLLECTION IS INSPIRED BY THE RUGGED, RUSTIC BEAUTY OF AMERICA'S NORTHWEST. THESE 100% LEATHER, HAIR-ON-HIDE AREA RUGS ARE METICULOUSLY CRAFTED WITH PATCHWORK PATTERNS AND CROSS-STITCH DETAILS.

**STYLE**  
CONTEMPORARY DESIGN

**FIBER**  
HAIR ON HIDE

**CONSTRUCTION**  
HAND-WOVEN

**ORIGIN**  
INDIA

**AVAILABLE SIZES**

2 FT X 3 FT	0.61M X 0.91M
5 FT 3 IN. X 7 FT 5 IN.	1.60M X 2.26M
8 FT X 10 FT	2.44M X 3.05M
9 FT X 12 FT	2.74M X 3.66M
10 FT X 14 FT	3.05M X 4.27M

All sizes approximate/Custom sizes available



CK960 IVORY

NORTHWEST COLLECTION



CK960 GREY

Calvin Klein



CK960 BEIGE

# Calvin Klein

## ABYSS COLLECTION

BRING A TOUCH OF MODERN MINIMALIST REFINEMENT TO ANY SPACE WITH AN ATLANTIC AREA RUG FROM THE CALVIN KLEIN ABYSS COLLECTION. EACH RUG IS HANDWOVEN, ADDING UNIQUE TEXTURAL VARIATIONS TO THE HIGH-LOW PILE. WITH MODERN, NEUTRAL PALETTES AND SUBTLE, LINEAR DESIGNS, ATLANTIC AREA RUGS ARE VERSATILE ENOUGH TO COMPLEMENT A VARIETY OF STYLES, FROM CLASSIC TO ECLECTIC.

**STYLE**  
CONTEMPORARY DESIGN

**FIBER**  
WOOL, POLYESTER,  
NYLON, & ACRYLIC

**CONSTRUCTION**  
HAND-WOVEN

**ORIGIN**  
INDIA

**AVAILABLE SIZES**

2 FT X 3 FT	0.61M X 0.91M
5 FT 7 IN. X 7 FT 3 IN.	1.70M X 2.21M
8 FT X 10 FT	2.44M X 3.05M
9 FT X 12 FT	2.74M X 3.66M
10 FT X 14 FT	3.05M X 4.27M

All sizes approximate



CK990 BLUE

ABYSS COLLECTION



CK990 SILVER/GREY

Calvin Klein



CK990  
BLUE



CK990  
SAND



CK990  
SILVER/GREY



PAGE 1  
AS301 CLAY  
18 in. x 18 in.



PAGE 1  
SH020 BLUE  
20 in. x 20 in.



PAGE 2  
GT037 CREAM  
20 in. x 20 in.



PAGE 9  
PDO19 BLACK WHITE  
20 in. x 20 in.



PAGE 85  
LH065 GREY  
18 in. x 18 in.



PAGE 86  
ES016 SILVER WHITE  
18 in. x 18 in.



PAGE 15,16  
TRO11 TURQUOISE SILVER  
20 in. x 20 in.



PAGE 68  
SS910 YELLOW  
18 in. x 18 in.



PAGE 10  
PD280 WHITE  
20 in. x 20 in.



PAGE 23  
DL825 MUSTARD  
20 in. x 20 in.



PAGE 23  
DL506 SAND  
20 in. x 20 in.



PAGE 24  
DL506 CLAY  
20 in. x 20 in.



PAGE 95  
CR420 MULTICOLOR  
12 in. x 20 in.



PAGE 95  
SH018 MUSTARD  
24 in. x 24 in.



PAGE 96  
SH020 MUSTARD  
20 in. x 20 in.



PAGE 68  
AZ009 YELLOW  
18 in. x 18 in.



PAGE 42  
DC142 IVORY  
20 in. x 20 in.



PAGE 42  
JB073 GOLD  
18 in. x 18 in.



PAGE 49  
F7101 BEIGE  
20 in. x 20 in.



PAGE 49  
AS301 CHARCOAL  
18 in. x 18 in.



PAGE 95  
CS018 GREY  
14 in. x 20 in.



PAGE 96  
E5000 YELLOW  
10 in. x 14 in.



PAGE 68  
AC032 GOLD  
18 in. x 18 in.



PAGE 160  
AZ612 MULTICOLOR  
12 in. x 20 in.



PAGE 42  
DL005 CHARCOAL  
13 in. x 33 in.



PAGE 60  
QY023 BEIGE  
6 in. x 20 in.



PAGE 68  
RC223 MUSTARD  
16 in. x 24 in.



PAGE 78  
SH018 GREY  
18 in. x 18 in.



PAGE 16  
*kathy ireland*<sup>®</sup> Home  
AA242 IVORY  
18 in. x 18 in.



PAGE 96  
E5000 SILVER  
20 in. x 20 in.



PAGE 96  
AC234 GOLD  
12 in. x 20 in.



PAGE 85  
A0027 GREY PEWTER  
18 in. x 18 in.



PAGE 2  
GT119 NATURAL THROW  
50 in. x 60 in.



PAGE 23  
SH019 MUSTARD THROW  
50 in. x 60 in.



PAGE 49  
SZ007 BEIGE THROW  
50 in. x 70 in.



PAGE 42  
MD201 CHARCOAL THROW  
50 in. x 60 in.



PAGE 85  
SS905 CHARCOAL THROW  
50 in. x 60 in.



PAGE 160  
SH018 BLUE THROW  
50 in. x 60 in.



PAGE 60  
AS263 CLAY POUF  
20 in. x 20 in. x 12 in.



PAGE 60  
AS263 SAGE POUF  
20 in. x 20 in. x 12 in.



PAGE 160  
SH018 BLUE POUF  
16 in. x 16 in. x 16 in.



A. AZ612 MULTICOLOR 12 in. x 20 in.  
B. SH018 BLUE THROW 50 in. x 60 in.  
C. SH018 BLUE POUF 16 in. x 16 in. x 16 in.

MINA VICTORY pillows/ accessories		6 in. x 20 in.	10 in. x 14 in.	12 in. x 24 in.	13 in. x 33 in.	14 in. x 20 in.	14 in. x 24 in.	14 in. x 26 in.	14 in. x 30 in.	16 in. x 16 in.	16 in. x 24 in.	17 in. x 17 in.	18 in. x 18 in.	20 in. x 20 in.	22 in. x 22 in.	24 in. x 24 in.	50 in. x 60 in.	50 in. x 70 in.
PILLOWS	AS301 CLAY												•					
	SH020 BLUE								•					•				
	GT037 CREAM <sup>2</sup>					•								•				
	PD019 BLACK WHITE													•				
	PD280 WHITE													•				
	DL825 MUSTARD													•				
	DL506 SAND													•				
	DL506 CLAY													•				
	DC142 IVORY					•								•				
	JB073 GOLD													•				
	DL005 CHARCOAL				•									•				
	AS301 CHARCOAL <sup>3</sup>													•				
	F7101 BEIGE										•			•				
	QY023 BEIGE	•																
	THROWS	GT119 NATURAL <sup>1</sup>																•
SH019 MUSTARD																	•	
SZ007 BEIGE																		•
MD201 CHARCOAL <sup>1</sup>																	•	
SS905 CHARCOAL																	•	
SH018 BLUE <sup>1,3</sup>																	•	

MINA VICTORY pillows/ accessories		6 in. x 20 in.	10 in. x 14 in.	12 in. x 20 in.	12 in. x 24 in.	13 in. x 33 in.	14 in. x 20 in.	14 in. x 24 in.	14 in. x 26 in.	14 in. x 30 in.	16 in. x 16 in.	16 in. x 24 in.	17 in. x 17 in.	18 in. x 18 in.	20 in. x 20 in.	22 in. x 22 in.	24 in. x 24 in.	16 in. x 16 in. x 16 in.	16 in. x 16 in. x 17 in.	20 in. x 20 in. x 12 in.
POUFS	AC032 GOLD													•						
	RC223 MUSTARD												•							
	SH018 GREY <sup>2,3</sup>							•						•			•			
	SS910 YELLOW													•						
	AZ009 YELLOW													•						
	AZ612 MULTICOLOR			•										•						
	LH065 GREY													•						
	ES016 SILVER WHITE													•						
	CR420 MULTICOLOR			•											•					
	SH018 MUSTARD <sup>2,3</sup>								•					•			•			
	CS018 GREY							•												
	E5000 YELLOW			•												•				
	E5000 SILVER														•					
	AC234 GOLD			•																
	SH020 MUSTARD												•			•				
	TR011 TURQUOISE SILVER															•				
	AA242 IVORY <i>kathy ireland® Home</i>								•						•					
	A0027 GREY PEWTER														•					
	AS263 SAGE																			•
	AS263 CLAY																			•
SH018 BLUE <sup>1,3</sup>																	•			

<sup>1</sup> Available in Pillow    <sup>2</sup> Available in Blanket    <sup>3</sup> Available in Pouf

<sup>1</sup> Available in Pillow    <sup>2</sup> Available in Blanket    <sup>3</sup> Available in Pouf

# RUG SIZES

N	Artworks	Chroma	Gemstone	Jaipur	Living Treasures	Majestic	Nourison 2000	Parisa	Prismatic	Starry Nights	Twilight	CK33 Mesa
SCATTER & ACCENTS	2 ft x 3 ft	•		•			•	•	•		•	•
	2 ft x 4 ft											
	3 ft x 4 ft				•		•					
	3 ft x 5 ft			•								
RECTANGLE AREA RUGS	4 ft x 6 ft/ 4 ft x 7 ft		•	•	•		•		•			•
	5 ft x 7 ft									•		
	5 ft x 8 ft			•				•				
	6 ft x 8 ft/ 6 ft x 9 ft	•	•	•	•	•	•		•		•	•
	7 ft x 9 ft/ 7 ft x 10 ft											
	8 ft x 10 ft	•	•	•	•	•	•	•	•	•	•	•
	8 ft x 11 ft/ 8 ft x 12 ft				•	•						
	9 ft x 12 ft	•	•	•			•	•	•	•	•	•
9 ft x 13 ft												
RUNNERS	6 ft Runner											
	8 ft Runner			•	•		•					•
	10 ft Runner							•				
	11 ft Runner											
	12 ft Runner					•			•			
SHAPES	4 ft/5 ft Round						•					
	6 ft Round			•	•		•					
	8 ft Round			•	•		•				•	
	10 ft Oval						•					
	10 ft Octagon						•					
OVER SIZED	10 ft x 13 ft/ 10 ft x 14 ft	•	•	•	•	•	•	•	•	•	•	•
	12 ft x 15 ft						•	•			•	
	Custom Sizes	•	•		•	•			•		•	•

CK36 Gradient	CK50 Balian	CK400 Halo	CK890 Pretoria	CK920 Kathmandu	CK930 Agadir	CK940 Riverstone	CK960 Northwest	CK990 Abyss
			•	•	•	•	•	•
		•		•		•		
	•	•			•			•
						•	•	
•			•	•				
•	•	•	•	•	•	•	•	•
•	•		•	•	•	•	•	•
•		•		•	•	•	•	

## CUSTOM RUGS

Nourison offers a variety of custom services for area rugs and broadloom carpet. Our talented design team will work with you to create a unique rug, or you can choose from our extensive library of colors and textures. Nourison can weave your rug from 100% wool, silk, or a combination of both. Various construction techniques are available, including hand knotted and loom-woven. Available rug dimensions range from small runners and rounds to oversized mansion rugs, ensuring your dream rug will fit your space perfectly.

FOR MORE INFORMATION,  
PLEASE SPEAK TO AN  
AUTHORIZED NOURISON  
DEALER OR VISIT  
[NOURISON.COM/CUSTOM](http://NOURISON.COM/CUSTOM)

All sizes approximate. Check individual collections in the catalog for exact sizing.



# RUG INFORMATION

## TYPES OF RUGS

### HAND KNOTTED

Hand knotting is the most labor-intensive of rug constructions. In the hands of master weavers, this technique can produce works of art unparalleled in detail and beauty. In a knotted rug, tiny threads are tied onto the warp, creating the pattern or design. The weft threads anchor and align the rows of knots. When the knots are later cut, they stand away from the warp/weft backing to create the velvety pile of the finished piece. The density of the pile is determined by how tightly the knots are packed together. There are a variety of actual knot styles, among which are Persian, Turkish, and Tibetan knots.

In Tibet, native weavers developed a distinctive method long ago of weaving woven on a vertical loom. A Tibetan knot is made when a metal rod is inserted into to the cotton foundation (warp and weft threads) during the knotting process. The two warp threads are at different positions around the weaving rod, and the threads are knotted form left to right.

When the row of knotting is completed, the knots are cut off the metal rod. This creates a surface texture in the pile with the signature horizontal striations that identify “Tibetan weave” to connoisseurs all world over. The most common Tibetan knotted rugs are in 60, 80, or 100 knots per square inch. The higher the knot count, the thinner the carpet. This type of weaving is indicative of tribal and modern designs.

### HAND TUFTED

Hand-tufted rugs and hand-hooked rugs are produced with a tufting gun. Working much like an oversized sewing needle, the gun pushes and pulls threads of yarn through a scrim — a pre-woven grid foundation. With a hooked rug, the loops of yarn are left intact to form a characteristically “knobby” pile. In a tufted rug, the tops of loops are sheared to expose the thread ends for a softer and plusher pile.

### HAND WOVEN

A flat-weave rug is constructed without a pile. Here, colored weft yarns are woven through the warps to create the pattern. There are numerous varieties of flat weaves: kilims, dhurries, and soumaks, to name a few.

A split-weave kilim is constructed when colored weft yarns are woven through the warps to create the pattern and the thread is pulled through the warp only as far as the pattern and color dictate. Then the thread

is turned back on itself to go the direction in which it came, finishing the same side on which it started. Different colored threads meet but do not join, creating the design.

Nourison’s patented Nourmak technique uses a warp-wrapping process, in which a weft thread is drawn over two to four warps, then back under half of them, repeatedly. The technique produces a herringbone-like effect across the back of the rug. The face of the rug is knotted to replicate worn, antique Persian rug where there is no pile. These rugs also have a hidden weft inserted after every other row.

### LOOM-WOVEN

Nourison’s loom-woven rugs are made on state-of-the-art looms, which have been customized to weave exceptional quality products with a feel and suppleness that rivals handmade rugs. These loom-woven pieces are then hand washed and hand finished, utilizing time-honored techniques, to accentuate the beauty of each individual rug. Loom-woven rugs from Nourison have the texture, look, and feel of a high-quality handmade piece without the high cost normally associated with handmade rugs.

### POWER-LOOM

Early power-loom enabled rug makers to produce floor coverings at a much faster rate than anything woven by hand. Though these early machine made rugs were by no means as detailed as those done by an artisan’s hands, they brought affordability and accessibility to a much larger market. Since the initial development of the power-loom, manufacturers have strived to re-create the look of a fine handmade carpet with varying degrees of success. When purchasing a power-loomed rug, remember, it’s not just about price!

Most important is that your rug is constructed of quality materials, like wool, natural fibers, or lasting synthetics dense enough to ensure—not only that the product lasts—but that it wears beautifully. Hand finishing or carving, featured in many Nourison power-loomed rugs, are sure signs of quality. A finely power-loomed rug is superior in detail and durability to one that is poorly handmade. Nourison’s power-loomed rugs are woven on state-of-the-art Wilton looms, known for their ability to produce incredibly intricate designs and superiorly blended colors. These electronically-driven looms also produce two rugs simultaneously, which are then cut apart, known as face-to-face weaving.

## FIBER CONTENT EXPLAINED

### ACRYLIC

Synthetic fiber with soft texture and excellent color retention.

### BAMBOO-EXTRUDED SILK-LIKE FIBERS

Fibers created by processing bamboo into a soft, silky thread similar to rayon, with antibacterial qualities as well as excellent strength and color retention.

### COTTON

Natural fibers created from cotton plants, featuring soft texture and used to create strong threads with excellent color retention.

### JUTE

Soft, shiny vegetable fiber spun into course threads.

### LEATHER

Tanned animal hide, typically cowhide.

### LUREX

Synthetic yarn with a metallic appearance.

### LUXCELLE™

A proprietary viscose fiber made from cellulose and purified cotton. Nourison developed the fiber specifically for use as a carpet yarn with superior strength, a fabulous silk-like sheen, and excellent color retention.

### NEW ZEALAND WOOL

Generally considered the top quality of wool.

### POLYACRYLIC

Synthetic, strong plastic-like fiber.

### POLYESTER

Synthetic fiber with excellent durability and color retention.

### POLYPROPYLENE

Synthetic, wool like appearance, very strong, excellent color retention.

### RAYON

Synthetic fiber with a silk-like feel and excellent color retention.

### SILK

Protein fiber, shimmering, strong soft to the touch.

### SISAL

Fiber created using sisal plant, often used in ropes as well as woven rugs and mats.

### VISCOSE

Synthetic Rayon-like fiber with a structure similar to cotton, created by treating cellulose extracted from plants such as soy, bamboo, and sugar cane.

### WOOL

Natural hair harvested from the coats of sheep or goats through sheering. Coarse texture with excellent durability and color retention.

# STYLE INFORMATION

## TRADITIONAL

Traditional designs are modern-day representations of time-honored European and Asian patterns. In some cases, a traditional rug’s design may be a pattern that has been used for generations.

Traditional rugs are normally considered formal, but they can also be used in casual living spaces.

Traditional rugs normally contain specific elements like floral and other intricate patterns, borders and central medallions.

## TRANSITIONAL

This style is a blending of traditional and contemporary styles. Quite often, the blend provides the elegance and timelessness of a traditional pattern with a little less formality.

For example, a transitional rug may feature a classic floral pattern but not a border, or, the rug’s design may feature a border and an intricate pattern but with little color contrast between the two elements.

## CONTEMPORARY

Contemporary rug designs are generally characterized by stark contrasts, bold uses of color, and geometric or free-form style elements. They are normally architectural and modern in their look. Contemporary rugs can also feature retro patterns.

Typically these designs are inspired by art deco and arts and crafts periods.

ARTWORKS	Contemporary	1 - 8	CK33 MESA	Contemporary	109 - 112
CHROMA	Contemporary	9 - 14	CK36 GRADIENT	Contemporary	113 - 120
GEMSTONE	Contemporary	15 - 22	CK50 BALIAN	Contemporary	121 - 128
JAIPUR	Traditional	23 - 32	CK400 HALO	Contemporary	129 - 132
LIVING TREASURES	Traditional	33 - 40	CK890 PRETORIA	Contemporary	133 - 136
MAJESTIC	Traditional	41 - 48	CK920 KATHMANDU	Contemporary	137 - 140
NOURISON 2000	Traditional	49 - 58	CK930 AGADIR	Contemporary	141 - 144
PARISA	Traditional	59 - 66	CK940 RIVERSTONE	Contemporary	145 - 148
PRISMATIC	Contemporary	67 - 84	CK960 NORTHWEST	Contemporary	149 - 152
STARRY NIGHTS	Traditional	85 - 94	CK990 ABYSS	Contemporary	153 - 156
TWILIGHT	Transitional	95 - 108			

# CLEANING & CARE

BY STAIN, FIBER & BLENDS

NOURISON.COM/RUG-CARE

STAIN	SUGGESTED CLEANING AND CARE
Acids	Detergent or white vinegar
Alcoholic beverages	Detergent, white vinegar, or cleaning fluid
Ammonia or Alkali	Detergent or white vinegar
Ball-point pen ink	Methylated spirits or turpentine
Beer	Detergent or white vinegar
Bleach	Detergent or white vinegar
Blood	Detergent, white vinegar, or starch paste
Burning cigarette	Brush off with a hard edge
Butter	Cleaning fluid
Candy	Detergent, white vinegar, or scrape & vacuum
Cellulose paint	Acetone
Chewing gum	Detergent, white vinegar, or cleaning fluid
Chocolate	Detergent, white vinegar, or cleaning fluid
Coffee	Glycerin
Cosmetics	Detergent, white vinegar, or cleaning fluid
Crayon	Detergent, white vinegar, or cleaning fluid
Egg	Detergent or white vinegar
Excrement (human)	Detergent or white vinegar
Excrement (pet)	Call a reputable cleaner
Fat and Oil	Blot with tissue, then use cleaning fluid
Fruit and juices	Detergent or white vinegar
Furniture polish	Detergent, white vinegar, or cleaning fluid
Glue	Alcohol
Grass	Methylated spirits
Gravy	Detergent, white vinegar, or cleaning fluid
Grease	Use cleaning fluid, or scrape and vacuum
Household cement	Detergent, white vinegar, or cleaning fluid*
Ice cream	Detergent, white vinegar, or cleaning fluid*
Ink	Water only
Iodine	Alcohol
Jam	Lukewarm water
Lipstick	Detergent, white vinegar, or cleaning fluid*
Medicine	Call a reputable cleaner
Metal polish	Detergent, white vinegar, or cleaning fluid*
Mildew	Call a reputable cleaner
Milk	Detergent, white vinegar, or cleaning fluid*
Mud	Detergent or white vinegar
Mustard	Detergent or white vinegar
Nail polish	Polish remover*
Oils	Cleaning fluid
Paint	Detergent, white vinegar, or cleaning fluid*

Perfume	Detergent, white vinegar or cleaning fluid*
Permanent ink	Call a reputable cleaner
Rust	Call a reputable cleaner
Salad dressing	Detergent, white vinegar, or cleaning fluid*
Sauces	Detergent, white vinegar, or cleaning fluid*
Shoe polish	Detergent, white vinegar, cleaning fluid, or scrape and vacuum
Soot	Vacuum, then use cleaning fluid
Tar	Cleaning fluid
Tea	Detergent or white vinegar
Urine (human)	Detergent or white vinegar
Urine (pet)	Call a reputable cleaner
Vomit	Detergent, white vinegar, or cleaning fluid
Wax	Cleaning fluid, or scrape and vacuum
Wine	Detergent, white vinegar, or cleaning fluid

FIBER	SUGGESTED CLEANING AND CARE
<b>New Zealand Wool</b> <b>Wool</b> <b>Rayon</b> <b>Cotton</b> <b>Nylon</b> <b>Faux Silk</b> <b>Acrylic</b> <b>Polyacrylic</b> <b>Modacrylic</b> <b>Polyester</b> <b>Polypropylene</b> <b>Shag</b> <b>Excel (Faux Silk/Cotton)</b>	<ul style="list-style-type: none"> <li>• Vacuum regularly.</li> <li>• Pile shedding is a normal characteristic of quality area rugs.</li> <li>• Avoid use of beater-bar type vacuum as they may cause yarns to pull or snag.</li> <li>• If this happens, avoid pulling yarn knots out of surface pile.</li> <li>• Clean spills immediately by blotting with a clean sponge or cloth.</li> <li>• Always use a professional cleaning service. Consumer self-cleaning methods are discouraged.</li> <li>• Rug padding is recommended.</li> </ul>
<b>Hair on Hide</b> <b>Leather</b> <b>Cowhide</b> <b>Suede Leather</b>	<ul style="list-style-type: none"> <li>• Natural skin rugs are not recommended for high-traffic areas.</li> <li>• Vacuum regularly on the lowest setting. Vacuums with beater bars are not recommended.</li> <li>• Clean spills immediately by wiping smoothly in the direction of the hair with a damp (but not wet) cloth, using mild soap and water.</li> <li>• Always use a professional cleaning service. Consumer self-cleaning methods are discouraged.</li> <li>• Rug Padding is recommended.</li> </ul>
<b>Jute</b> <b>Sisal</b>	<ul style="list-style-type: none"> <li>• Do not steam clean or wet shampoo your jute rug. Plant fibers are highly absorbent, so they are subject to some shrinking and puckering when exposed to liquids or excessive dampness.</li> <li>• Always use a professional cleaning service. Consumer self-cleaning methods are discouraged.</li> <li>• Rug Padding is recommended.</li> </ul>
<b>Viscose</b> <b>Luxcelle™</b> <b>Bamboo-extruded Silk-like Fibers</b>	<ul style="list-style-type: none"> <li>• Vacuum regularly. Vacuums with beater bars are not recommended.</li> <li>• Avoid pulling yarn knots out of surface pile.</li> <li>• Always use a professional cleaning service. Consumer self-cleaning methods are discouraged. Carpet can easily stain and yellow with improper cleaning chemicals.</li> <li>• For spills, blot the affected area with white paper towels or a clean white terry cloth towel. Moisture will weaken the fiber, and rubbing could then cause breaking or damage.</li> <li>• After blotting stains, groom by combing the face of the rug in the direction of the pile with a soft brush. The pile may look flatter and more reflective afterward.</li> <li>• Once dry, re-brush the fiber to regain original texture.</li> <li>• Rug padding is recommended.</li> </ul>

\*If recommended procedure is not effective, call a reputable cleaner, particularly for complex stains. Don't wait for annual cleaning, since it may be too late by then to remove the stain.

# RUG PAD

10 YEAR GUARANTEE

GUARANTEED TO RETAIN ITS NON-SLIP PROPERTIES WITH PROPER CARE

## FOR SAFETY

Rug pads hold rugs in place. A rug pad can help prevent bunching, which can lead to tripping; and rug shift, which can lead to slipping. Even when a rug seems "secured" by furniture or on carpet, a rug pad adds an extra layer of protections against mishaps.

## FOR DURABILITY

Rug pads protect the rug's weave, which can be worn by the constant pulling and tugging of foot traffic and vacuuming. A rug pad extends the life of the rug, and protects your investment.

## FOR COMFORT & AESTHETICS

Rug pads provide extra padding, increasing comfort, insulation, and sound proofing in the home. A rug pad also provides a buffer zone for dirt and dust, keeping them off of your hard surfaces, and making them easier to vacuum away.

## IT IS IMPORTANT TO CHOOSE THE RIGHT TYPE OF RUG PAD FOR YOUR FLOORING

Hard surface rug pads can be used on hardwood, stone, tile or vinyl.



Advanced protection and cushioning for hard surfaces. Provides superior, ultra-thick cushioning to prevent pile crush & extend rug life. Rug pads hold rugs in place, helping prevent bunching & slipping. Open weave allows ventilation for vacuuming & moisture evaporation.

## FEATURES

POLYESTER WITH HIGH-GRADE VINYL  
WILL NOT STAIN OR DISCOLOR FLOOR  
HANDWASH

## FIRM GRIP

AVAILABLE SIZES

1 ft 10 in. x 7 ft 6 in.  
1 ft 10 in. x 9 ft 6 in.  
1 ft 10 in. x 11 ft 6 in.  
2 ft 6 in. x 4 ft 2 in.  
3 ft 4 in. x 5 ft  
4 ft 8 in. x 7 ft 6 in.  
5 ft 8 in. x 8 ft 6 in.  
7 ft 6 in. Round  
7 ft 6 in. x 9 ft 6 in.  
7 ft 6 in. x 10 ft 6 in.  
8 ft 6 in. x 11 ft 6 in.  
9 ft 6 in. x 13 ft 6 in.  
11 ft 6 in. x 14 ft 6 in.



Premier protection and cushioning. Provides the ultimate in cushioning and insulation. The needle-punched fabric and textured waffle-backing provides improved gripping power. Use with the needle-punched fabric down while on carpet, and with the textured waffle-backing when on wood, tile, and other hard surfaces. Superior thickness is ideal for tile and uneven surfaces & reduces puckering under furniture.

## FEATURES

100% POST INDUSTRIAL RECYCLED SYNTHETIC FIBERS  
GREEN LABEL PLUS CERTIFIED  
MAY BE USED OUTDOORS

## RUG LOC

AVAILABLE SIZES

2 ft x 8 ft  
2 ft x 10 ft  
2 ft x 12 ft  
3 ft x 5 ft  
5 ft Round  
5 ft x 8 ft  
6 ft x 9 ft  
7 ft 6 in. Round  
8 ft x 10 ft  
8 ft x 11 ft  
9 ft x 12 ft  
10 ft x 14 ft  
12 ft x 15 ft

# LOCATIONS

SHOWROOMS & HEADQUARTERS

NOURISON.COM

## NOURISON INDUSTRIES, INC., US HEADQUARTERS

5 Sampson St., Saddle Brook, NJ 07663  
(800) 223-1110 | Fax (201) 368-0739

## NEW YORK SHOWROOM

230 Fifth Avenue, Suite 1305, New York, NY 10001  
(212) 545-1030

## LAS VEGAS SHOWROOM

World Market Center, Building C | 455 S. Grand Central Pkwy., Suite C112, Las Vegas, NV 89106  
(702) 454-2600

## HIGH POINT SHOWROOM

International Home Furnishings Center (IHFC) | 210 E. Commerce Ave., InterHall IH101 High Point, NC 27260  
(336) 841-6900

## NOURISON EUROPE

Freilagerstrasse 39, 8047 Zurich, Switzerland  
(+41) 044 401 45 46/47 | Fax (+41) 044 401 45 48

Photos and images in this catalog are for reference only; actual colors and textures may vary.  
Rugs shown are of specific size; design details may vary with size changes.

© N O U R I S O N 2 0 2 1

NOURISON.COM

